

## Product datasheet for **TA385974**

### EGFR Rabbit Monoclonal Antibody [Clone ID: S3 12D]

#### Product data:

Product Type:	Primary Antibodies
Clone Name:	S3 12D
Applications:	ELISA, ICC, IF, IHC, WB
Reactivity:	Human
Host:	Rabbit
Isotype:	IgG, kappa
Clonality:	Monoclonal
Immunogen:	Human EGFR.
Specificity:	

The antibody binds specifically to EGFR, a cell-surface receptor which is part of the ErbB family of receptors. The EGFR is a receptor tyrosine kinase, which, upon activation by its ligands, such as epidermal growth factor and transforming growth factor alpha, triggers signal transduction pathways that increase cell migration, adhesion and proliferation. Mutations that lead to the overexpression of EGFR are associated with the development of cancer. The S3 12D antibody is prepared from isolation of phage antibodies of the spleen library.

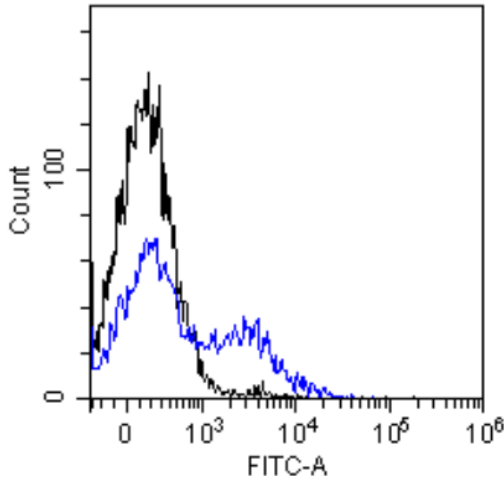
Formulation:	PBS with 0.02% Proclin 300.
Concentration:	lot specific
Conjugation:	Unconjugated
Storage:	Please store at 4°C for up to 3 months. For longer storage, aliquot and store at -20°C. Avoid freeze and thaw cycles.
Stability:	3 years from dispatch.
Gene Name:	epidermal growth factor receptor
Database Link:	<a href="#">Entrez Gene 1956 Human P00533</a>
Synonyms:	ERBB; ERBB1; HER1; mENA; PIG61



[View online »](#)

**Note:** This chimeric rabbit antibody was made using the variable domain sequences of the original Mouse scFv antibody fragment format, for improved compatibility with existing reagents, assays and techniques.

**Product images:**



Flow-cytometry using the anti-EGFR S3 12D (TA385974) Mouse splenocytes were stained with unimmunized rabbit IgG antibody (black line) or the rabbit-chimeric version of S3 12D (TA385974, blue line) at a concentration of 10 µg/ml for 30 mins at RT. After washing, bound antibody was detected using anti-rabbit IgG JK (FITC-conjugate) antibody at 2 µg/ml and cells analyzed on a FACSCanto flow-cytometer.