

## Product datasheet for **TA385972**

### CD4 Rabbit Monoclonal Antibody [Clone ID: CE9.1 (Clenoliximab)]

#### Product data:

Product Type:	Primary Antibodies
Clone Name:	CE9.1 (Clenoliximab)
Applications:	BI, ELISA, FC, IHC
Reactivity:	Human, Chimpanzee
Host:	Rabbit
Clonality:	Monoclonal
Immunogen:	Domain 1 of human CD4.
Specificity:	The antibody binds to human CD4 with a Kd of 1.0 nM and an ED50 of 0.2 ug/ml.

The antibody binds specifically to CD4, a molecule which is part of the immunoglobulin superfamily, expressed on the surface of helper T cells. The CD4 molecule acts as a co-receptor in the activation of T cells, aiding the interaction between the TCR and MHC II of the antigen-presenting cell. The antibody is classified as "primatized", as the variable regions of the light and heavy chains are obtained from primates, while the lamda light chain and  $\gamma$ 4 heavy chain constant domains are human. The antibody was engineered from the primatized IgG1 monoclonal antibody Keliximab by substituting two key residues. The role of the antibody as an immunosuppressor has been tested in vivo, by intravenous administration in chimpanzees and human volunteers. The antibody reached Phase II clinical trials with Biogen-Idec.

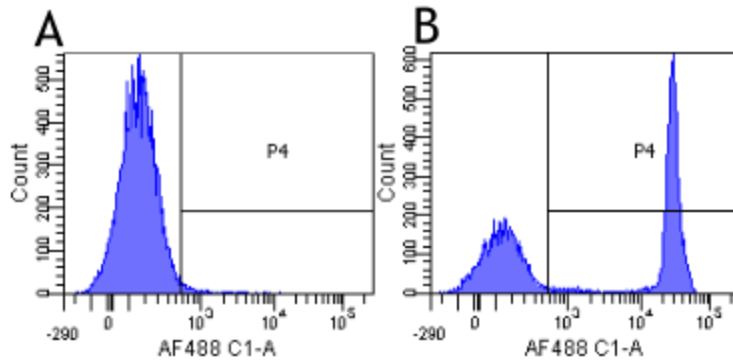
Formulation:	PBS with 0.02% Proclin 300.
Concentration:	lot specific
Conjugation:	Unconjugated
Storage:	Please store at 4°C for up to 3 months. For longer storage, aliquot and store at -20°C. Avoid freeze and thaw cycles.
Stability:	3 years from dispatch.
Gene Name:	CD4 molecule
Database Link:	<a href="#">Entrez Gene 920 Human P01730</a>
Synonyms:	CD4mut



[View online »](#)

**Note:** NOT FOR THERAPEUTIC USE - This is a research-grade biosimilar. This chimeric rabbit antibody was made using the variable domain sequences of the original Human IgG4 (primatized) format, for improved compatibility with existing reagents, assays and techniques.

### Product images:



Flow-cytometry using the anti-CD4 research biosimilar antibody Clenoliximab (CE9.1, TA385972) Human lymphocytes were stained with an isotype control ([TA385644], panel A) or the rabbit-chimeric version of Clenoliximab (TA385972, panel B) at a concentration of 1 µg/ml for 30 mins at RT. After washing, bound antibody was detected using a AF488 conjugated donkey anti-rabbit antibody and cells analysed on a FACSCanto flow-cytometer.