

Product datasheet for **TA385969**

Integrin alpha 5 (ITGA5) Rabbit Monoclonal Antibody [Clone ID: M200 (Volociximab)]

Product data:

Product Type:	Primary Antibodies
Clone Name:	M200 (Volociximab)
Applications:	BI, ELISA, FC, IF, IHC
Reactivity:	Human
Host:	Rabbit
Isotype:	IgG, kappa
Clonality:	Monoclonal
Immunogen:	Heterodimeric $\alpha 5\beta 1$ Fc fusion protein
Specificity:	The antibody binds to human $\alpha 5\beta 1$ integrin with a Kd of 0.367 nM (determined by Biacore), an EC50 of 0.2 nM and an IC50 of 2.3 nM.

The antibody binds specifically to $\alpha 5\beta 1$ integrin, which is part of the superfamily of glycoprotein transmembrane receptors for ligands such as fibronectin, vitronectin, laminins and collagens. The $\alpha 5\beta 1$ integrin receptor plays a key role in cellular processes such as inflammation, cell proliferation, angiogenesis and tumour metastasis. Comprising the variable domain of the original mouse antibody, a chimeric mouse:human IgG4 version of this antibody has been tested in vivo: In cynomolgus monkeys with laser-induced choroidal neovascularization (CNV), in rabbit models and in human volunteers. The antibody reached Phase II clinical trials with PDL Biopharma and Biogen-Idec.

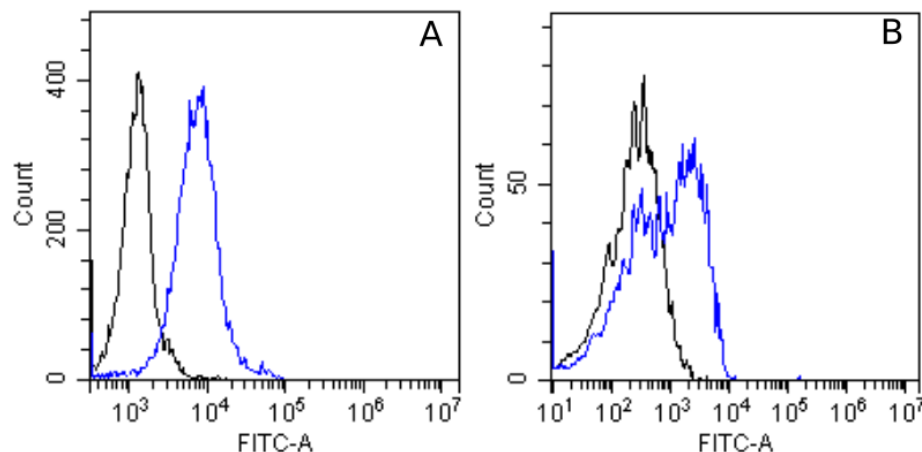
Formulation:	PBS with 0.02% Proclin 300.
Concentration:	lot specific
Conjugation:	Unconjugated
Storage:	Please store at 4°C for up to 3 months. For longer storage, aliquot and store at -20°C. Avoid freeze and thaw cycles.
Stability:	3 years from dispatch.
Gene Name:	integrin subunit alpha 5
Database Link:	Entrez Gene 3678 Human P08648


[View online »](#)

Synonyms: CD49e; FNRA; VLA-5; VLA5A

Note: NOT FOR THERAPEUTIC USE - This is a research-grade biosimilar. This chimeric rabbit antibody was made using the variable domain sequences of the original Human IgG4 format, for improved compatibility with existing reagents, assays and techniques.

Product images:



Flow-cytometry using the anti-alpha 5 beta 1 Integrin M200 (Volociximab) (TA385969) PBMC's (A) and U93 cells (B) were stained with unimmunized rabbit IgG antibody (black line) or the rabbit-chimeric version of M200 (Volociximab) (TA385969, blue line) at a concentration of 10 µg/ml for 30 mins at RT. After washing, bound antibody was detected using anti-rabbit IgG JK (FITC-conjugate) antibody at 2 µg/ml and cells analyzed on a FACSCanto flow-cytometer.