

Product datasheet for **TA385963**

CD40L (CD40LG) Rabbit Monoclonal Antibody [Clone ID: hu5c8 (Ruplizumab)]

Product data:

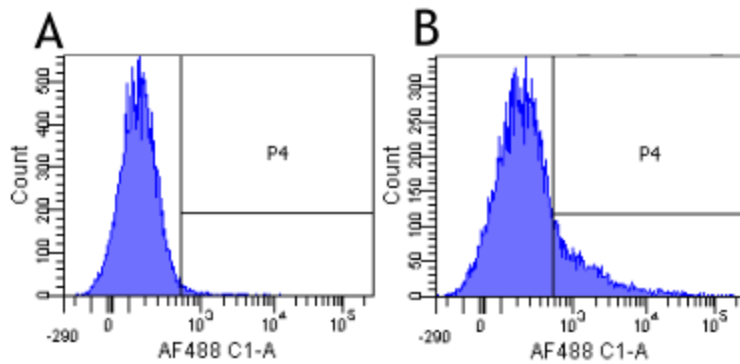
Product Type:	Primary Antibodies
Clone Name:	hu5c8 (Ruplizumab)
Applications:	BI, FC, WB
Reactivity:	Human
Host:	Rabbit
Isotype:	IgG, kappa
Clonality:	Monoclonal
Immunogen:	Human CD40L
Specificity:	The antibody binds to CD40L with an IC50 of 0.845 ug/ml.

The antibody binds specifically to CD40L, a surface receptor expressed on activated T cells which acts as a costimulatory molecule to trigger immune responses. The antibody neutralises CD40L function, as it blocks the interaction between CD40 and CD40L. When injected into cynomolgus monkeys, the original therapeutic antibody was found to have a T1/2 of 531 ± 155 hours.

Formulation:	PBS with 0.02% Proclin 300.
Concentration:	lot specific
Conjugation:	Unconjugated
Storage:	Please store at 4°C for up to 3 months. For longer storage, aliquot and store at -20°C. Avoid freeze and thaw cycles.
Stability:	3 years from dispatch.
Gene Name:	CD40 ligand
Database Link:	Entrez Gene 959 Human P29965
Synonyms:	CD40-L; CD40L; CD154; gp39; hCD40L; HIGM1; IGM; IMD3; T-BAM; TNFSF5; TRAP
Note:	NOT FOR THERAPEUTIC USE - This is a research-grade biosimilar. This chimeric rabbit antibody was made using the variable domain sequences of the original Human IgG1 format, for improved compatibility with existing reagents, assays and techniques.



[View online »](#)

Product images:

Flow-cytometry using the anti-CD40L research biosimilar antibody Ruplizumab (hu5c8, TA385963) Human lymphocytes were stained with an isotype control ([TA385644], panel A) or the rabbit-chimeric version of Ruplizumab (TA385963, panel B) at a concentration of 1 µg/ml for 30 mins at RT. After washing, bound antibody was detected using a AF488 conjugated donkey anti-rabbit antibody and cells analysed on a FACSCanto flow-cytometer.