

## Product datasheet for **TA385940**

### alpha Tubulin (TUBA1A) Rabbit Monoclonal Antibody [Clone ID: F2C]

#### Product data:

Product Type:	Primary Antibodies
Clone Name:	F2C
Applications:	ELISA, WB
Reactivity:	Human
Host:	Rabbit
Clonality:	Monoclonal
Immunogen:	Human MBP (microtubule-binding protein).
Specificity:	Binds specifically to human alpha-tubulin (no crossreactivity with beta-tubulin).

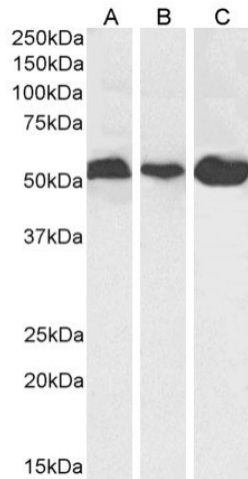
This antibody binds alpha-tubulin. Tubulin is the major constituent of microtubules. The alpha-chain has a non-exchangeable GTP-binding site.

Formulation:	PBS with 0.02% Proclin 300.
Concentration:	lot specific
Conjugation:	Unconjugated
Storage:	Please store at 4°C for up to 3 months. For longer storage, aliquot and store at -20°C. Avoid freeze and thaw cycles.
Stability:	3 years from dispatch.
Gene Name:	tubulin alpha 1a
Database Link:	<a href="#">Entrez Gene 7846 Human Q71U36</a>
Synonyms:	B-ALPHA-1; FLJ25113; hum-a-tub1; hum-a-tub2; LIS3; TUBA3
Note:	This full-length, chimeric rabbit antibody was made using the variable domain sequences of the original Human scFv format, for improved compatibility with existing reagents, assays and techniques.

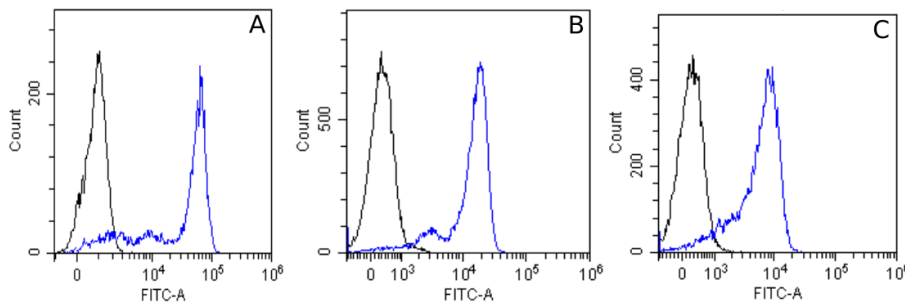


[View online »](#)

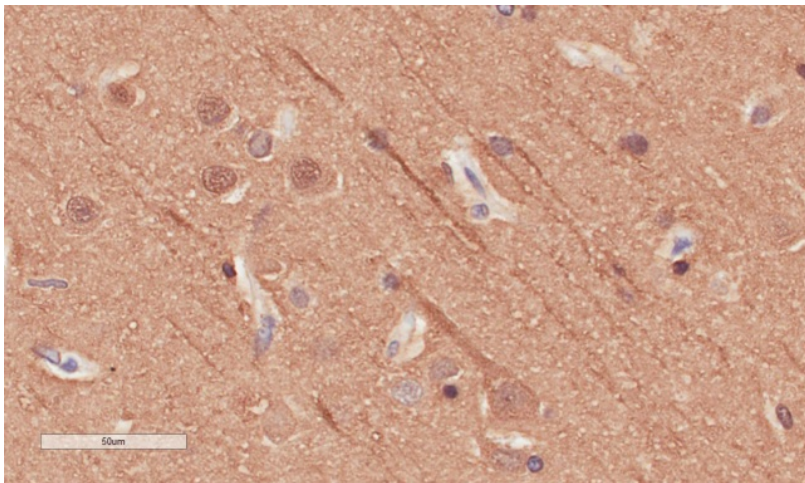
Product images:



Western Blot using anti-Alpha-Tubulin antibody F2C (TA385940) HeLa (A), HEK293 (B), and HepG2 (C) cell lysate samples (35µg protein in RIPA buffer) were resolved on a 10% SDS PAGE gel and blots probed with the chimeric rabbit version of F2C (TA385940) at 0.01 µg/ml before detection using an anti-rabbit secondary antibody. A primary incubation of 1h was used and protein was detected by chemiluminescence. The expected band size for Alpha-Tubulin is ~55kDa. TA385940 successfully detected human Alpha-Tubulin in HeLa, HEK293, and HepG2 cell lysate samples.



Flow-cytometry using the anti-Alpha Tubulin F2C (TA385940) HepG2 (A), HeLa (B) and Hek293 (C) cells were stained with unimmunized rabbit IgG antibody (black line) or the rabbit-chimeric version of F2C (TA385940, blue line) at a concentration of 10 µg/ml for 30 mins at RT. After washing, bound antibody was detected using anti-rabbit IgG JK (FITC-conjugate) antibody at 2 µg/ml and cells analyzed on a FACSCanto flow-cytometer.



Immunohistochemical staining of human cerebral cortex tissue using anti-Alpha Tubulin antibody (TA385940) F2C Anti-Alpha Tubulin staining of paraffin embedded human cerebral cortex tissue using the rabbit-chimeric version of F2C (TA385940). Antigen retrieval was achieved by microwaving in citrate buffer (pH6), followed by blocking with protein block serum-free buffer. Primary antibody incubation with TA385940 was carried out at 4 µg/ml for 30 minutes. Samples were then incubated with an anti-rabbit IgG HRP secondary antibody for 20 mins followed by DAB (3,3'-diaminobenzidine), and counter-staining with haematoxylin. Staining of axons and a few neuronal cell bodies may be observed. Recommended concentration, 2-4 µg/ml.