

Product datasheet for **TA385937**

Paxillin (PXN) Mouse Monoclonal Antibody [Clone ID: LD2 sAB]

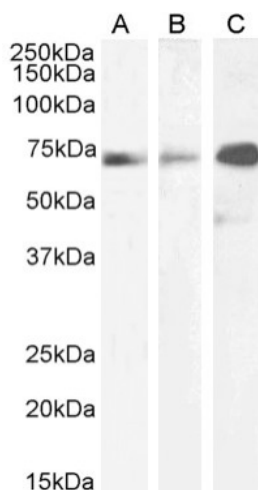
Product data:

Product Type:	Primary Antibodies
Clone Name:	LD2 sAB
Applications:	ELISA, WB
Reactivity:	Human
Host:	Mouse
Isotype:	IgG1, kappa
Clonality:	Monoclonal
Immunogen:	Peptide corresponding to paxillin-LD2 motif (residues 141-156) fused to MBP; peptide sequence: NLSELDRLLELNAVQHNP.
Specificity:	<p>The antibody binds specifically to the LD-2 motif of human paxillin with a Kd of 24 nM.</p> <p>This antibody binds to the LD2-motif of human paxillin, a signal transduction adaptor protein involved in focal adhesion, with binding partners including integrins, Src, FAK or actin complexes. The antibody inhibits complex formation between paxillin and FAK. Paxillin is involved in both inside-out cell signalling and outside-to-inside cell signalling.</p>
Formulation:	PBS with 0.02% Proclin 300.
Concentration:	lot specific
Conjugation:	Unconjugated
Storage:	Please store at 4°C for up to 3 months. For longer storage, aliquot and store at -20°C. Avoid freeze and thaw cycles.
Stability:	3 years from dispatch.
Gene Name:	paxillin
Database Link:	Entrez Gene 5829 Human P49023
Synonyms:	FLJ16691; paxillin
Note:	This full-length, reformatted mouse antibody was made using the variable domain sequences of the original Mouse scFv format, for improved compatibility with existing reagents, assays and techniques.



[View online »](#)

Product images:



Western Blot using anti-Paxillin (LD2 Motif) antibody LD2 sAB (TA385937) HepG2 (A), A431 (B), and HeLa (C) cell lysate samples (35 μ g protein in RIPA buffer) were resolved on a 10% SDS PAGE gel and blots probed with the chimeric mouse IgG1 version of LD2 sAB (TA385937) at 2 μ g/ml before detection using an anti-mouse secondary antibody. A primary incubation of 1h was used and protein was detected by chemiluminescence. The predicted running size for Paxillin is 64.5 kDa. TA385937 successfully detected Paxillin in HepG2, A431, and HeLa cell lysate samples.