

## Product datasheet for **TA385931**

### Her2 (ERBB2) Mouse Monoclonal Antibody [Clone ID: SER4]

#### Product data:

Product Type:	Primary Antibodies
Clone Name:	SER4
Applications:	ELISA
Reactivity:	Human
Host:	Mouse
Isotype:	IgG1, kappa
Clonality:	Monoclonal
Immunogen:	Recombinant HER2/neu.
Specificity:	The antibody binds specifically to the extracellular domain of human ErbB-2.

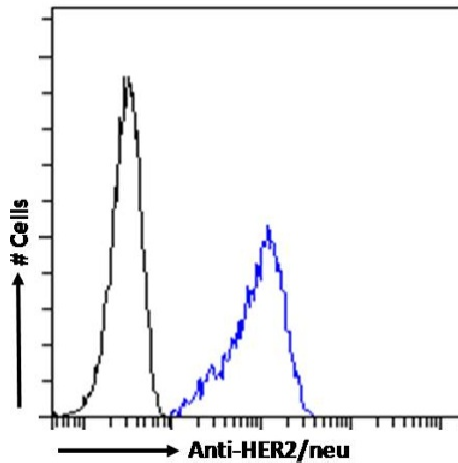
The antibody binds to human ErbB-2, a receptor tyrosine kinase (RTK) controlling cell growth and microtubule stabilization. Full-length antibody or Fab fragments cross-linked by secondary antibody had a growth-inhibiting effect on ErbB-2 positive MDA-MB-453 cells. This effect was not seen with Fab fragments alone.

Formulation:	PBS with 0.02% Proclin 300.
Concentration:	lot specific
Conjugation:	Unconjugated
Storage:	Please store at 4°C for up to 3 months. For longer storage, aliquot and store at -20°C. Avoid freeze and thaw cycles.
Stability:	3 years from dispatch.
Gene Name:	erb-b2 receptor tyrosine kinase 2
Database Link:	<a href="#">Entrez Gene 2064 Human P04626</a>
Synonyms:	C-erbB-2; CD340; erbB-2; HER-2; HER-2/neu; HER2; herstatin; NEU; NGL; p185erbB2; TKR1

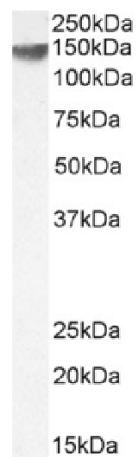


[View online »](#)

## Product images:



Flow cytometry using the anti-HER2/neu antibody SER4 (TA385931). Paraformaldehyde fixed MCF7 cells were stained with anti-unknown specificity antibody ([TA385783]; isotype control, black line) or the mouse IgG1 version of SER4 (TA385931, blue line) at a dilution of 1:100 for 1h at RT. After washing, the bound antibody was detected using a goat anti-mouse IgG AlexaFluor® 488 antibody at a dilution of 1:1000 and cells analyzed using a FACSCanto flow-cytometer.



Western Blot using anti-HER2/neu antibody SER4 (TA385931). human breast cancer tissue lysate (35µg protein in RIPA buffer) was resolved on an SDS PAGE gel and blots probed with the chimeric mouse IgG version of SER4 (TA385931) at 2 µg/ml before detection using an anti-mouse secondary antibody. A primary incubation of 1h was used and protein was detected by chemiluminescence.