

Product datasheet for **TA385924**

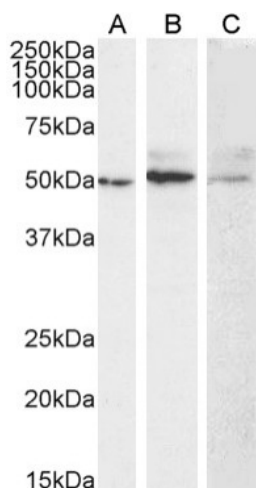
MMP14 Mouse Monoclonal Antibody [Clone ID: LEM-2/15]

Product data:

Product Type:	Primary Antibodies
Clone Name:	LEM-2/15
Applications:	BI, ELISA
Reactivity:	Human
Host:	Mouse
Isotype:	IgG1, kappa
Clonality:	Monoclonal
Immunogen:	The cyclic peptide possessing the sequence of residues 218-233 of the V-B-loop of MT1-MMP.
Specificity:	This antibody binds to residues 218-233 of the V-B loop of MT1-MMP with a Kd of 2.32E10-9M. This antibody binds to residues 218-233 of the V-B loop of MT1-MMP which is a mediator of cell migration and is frequently involved in malignancy of tumours by promoting metastasis. The antibody acts as a non-competitive inhibitor of the receptor.
Formulation:	PBS with 0.02% Proclin 300.
Concentration:	lot specific
Conjugation:	Unconjugated
Storage:	Please store at 4°C for up to 3 months. For longer storage, aliquot and store at -20°C. Avoid freeze and thaw cycles.
Stability:	3 years from dispatch.
Gene Name:	matrix metalloproteinase 14
Database Link:	Entrez Gene 4323 Human P50281
Synonyms:	MMP-14; MMP-X1; MT1-MMP; MT1MMP; MTMMP1



[View online »](#)

Product images:

Western Blot using anti-MT1-MMP (Membrane type 1 metalloprotease) antibody LEM-2/15 (TA385924) A549 (A), HepG2 (B) and HeLa (C) cell lysate samples (35 μ g protein in RIPA buffer) were resolved on a 10% SDS PAGE gel and blots probed with the chimeric mouse IgG1 version of LEM-2/15 (TA385924) at 0.3 μ g/ml before detection using an anti-mouse secondary antibody. A primary incubation of 1h was used and protein was detected by chemiluminescence. The predicted running size for unprocessed MT1-MMP is 65.9 kDa. A signal peptide and propeptide are cleaved from MT1-MMP during post-translational processing. The processed form of MT1-MMP may be seen in all samples, and the unprocessed form in lanes B and C. TA385924 successfully detected MT1-MMP in A549, HepG2 and HeLa cell lysates.