

## Product datasheet for **TA385918**

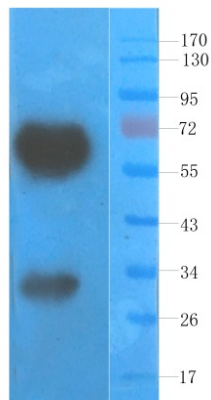
### VEGFA Mouse Monoclonal Antibody [Clone ID: A.4.6.1]

#### Product data:

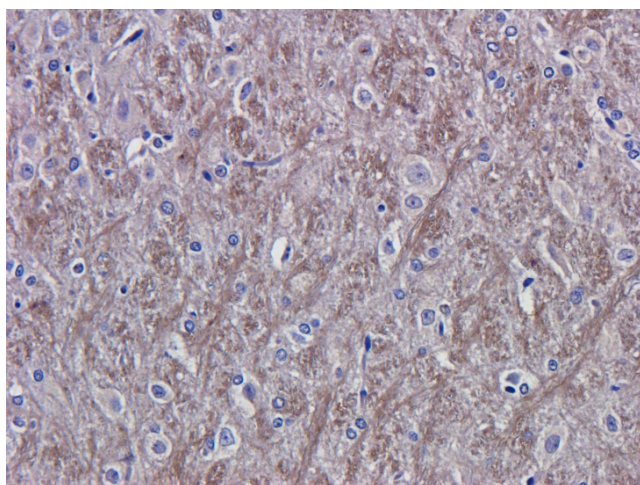
Product Type:	Primary Antibodies
Clone Name:	A.4.6.1
Applications:	BI, ELISA, FC, IHC, IP, WB
Reactivity:	Human, Rat
Host:	Mouse
Isotype:	IgG1, kappa
Clonality:	Monoclonal
Immunogen:	Recombinant human VEGF.
Specificity:	Binds native and reduced human VEGF (isoform 165), with a Kd of 0.8 nm determined for the original clone.  This is the parental antibody clone to the humanized, therapeutic antibody Bevacizumab (marketed as Avastin) binding to VEGF. VEGF is a growth factor active in angiogenesis, vasculogenesis and endothelial cell growth. It induces endothelial cell proliferation, promotes cell migration, inhibits apoptosis and induces permeabilization of blood vessels.
Formulation:	PBS with 0.02% Proclin 300.
Concentration:	lot specific
Conjugation:	Unconjugated
Storage:	Please store at 4°C for up to 3 months. For longer storage, aliquot and store at -20°C. Avoid freeze and thaw cycles.
Stability:	3 years from dispatch.
Gene Name:	vascular endothelial growth factor A
Database Link:	<a href="#">Entrez Gene 7422 Human P15692</a>
Synonyms:	MGC70609; MVCD1; VEGF; VEGF-A; VPF



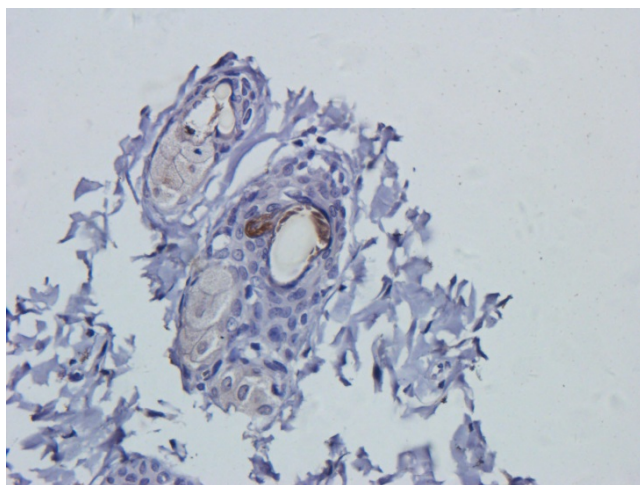
[View online »](#)

**Product images:**

Western Blot using anti-VEGF antibody TA385918. Rat skin lysate was resolved on a 10% SDS PAGE gel and blots probed with TA385918 at 1.0  $\mu\text{g}/\text{ml}$  before being detected by a secondary antibody. The expected band size (27 kDa) is seen along with bands corresponding to dimers.



Immunohistochemical staining of rat brain tissue using anti-VEGF antibody (TA385918) A.4.6.1. Anti-VEGF staining of formaldehyde fixed paraffin embedded rat brain tissue, at 40x magnification. The mouse IgG1-chimeric version of A.4.6.1 (TA385918) was used to stain samples at a concentration of 5  $\mu\text{g}/\text{ml}$ .



Immunohistochemical staining of rat skin tissue using anti-VEGF antibody (TA385918) A.4.6.1 Anti-VEGF staining of formaldehyde fixed paraffin embedded rat skin tissue, at 40x magnification. The mouse IgG1-chimeric version of A.4.6.1 (TA385918) was used to stain samples at a concentration of 5 µg/ml.