

Product datasheet for **TA385915**

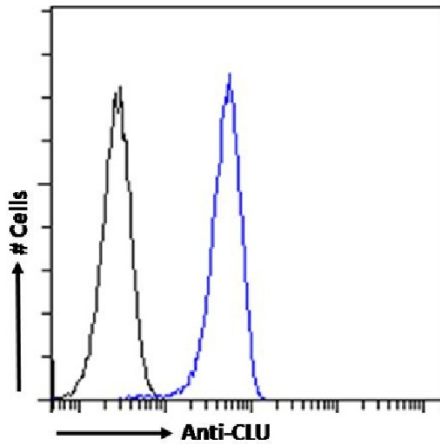
Clusterin (CLU) Rabbit Monoclonal Antibody [Clone ID: SAIC-43B-8]

Product data:

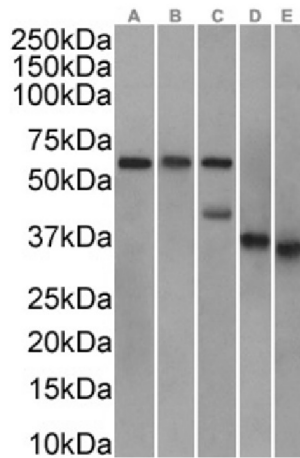
Product Type:	Primary Antibodies
Clone Name:	SAIC-43B-8
Applications:	ELISA, WB
Reactivity:	Human
Host:	Rabbit
Isotype:	IgG, kappa
Clonality:	Monoclonal
Immunogen:	Peptide "ASSIIDELFQDR" derived from Clusterin conjugated to KLH. Clusterin isoform 1 functions as extracellular chaperone that prevents aggregation of nonnative proteins
Specificity:	Recognises human CLU.
	Original data characterizing this antibody may be found here .
Formulation:	PBS with 0.02% Proclin 300.
Concentration:	lot specific
Conjugation:	Unconjugated
Storage:	Please store at 4°C for up to 3 months. For longer storage, aliquot and store at -20°C. Avoid freeze and thaw cycles.
Stability:	3 years from dispatch.
Gene Name:	clusterin
Database Link:	Entrez Gene 1191 Human P10909
Synonyms:	AAG4; Apo-J; APOJ; CLI; clusterin; KUB1; MGC24903; NA1/NA2; SGP-2; SGP2; SP-40; TRPM-2; TRPM2



[View online »](#)

Product images:


Flow cytometry using the Anti-CLU antibody SAIC-43B-8 (TA385915). Paraformaldehyde fixed HeLa cells permeabilized with 0.5% Triton were stained with anti-unknown specificity antibody ([TA385792]; isotype control, black line) or the rabbit IgG version of SAIC-43B-8 (TA385915, blue line) at a dilution of 1:100 for 1h at RT. After washing, the bound antibody was detected using a goat anti-rabbit IgG AlexaFluor® 488 antibody at a dilution of 1:1000 and cells analyzed using a FACSCanto flow-cytometer.



Western Blot using anti-CLU antibody SAIC-43B-8 (TA385915). HeLa(A) (0.03 μ g/ml), MCF7(B) (0.01 μ g/ml) cell lysate and human brain cerebellum(C) (0.03 μ g/ml), human plasma (D) (0.03 μ g/ml) and human testes(E) (0.03 μ g/ml) tissue lysates (35 μ g protein in RIPA buffer) were resolved on a SDS PAGE gel and blots were probed with the chimeric rabbit version of SAIC-43B-8 (TA385915) before detection using an anti-rabbit secondary antibody. A primary incubation of 1h was used and protein was detected by chemiluminescence.