

## Product datasheet for **TA385913**

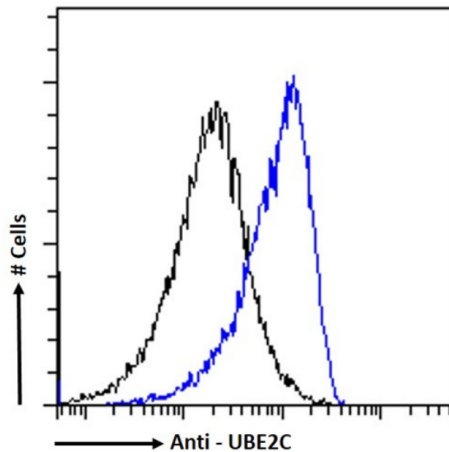
### UBE2C Rabbit Monoclonal Antibody [Clone ID: SAIC-41A-1]

#### Product data:

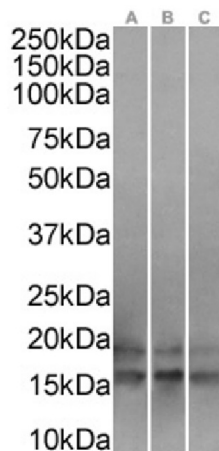
Product Type:	Primary Antibodies
Clone Name:	SAIC-41A-1
Applications:	ELISA, WB
Reactivity:	Human
Host:	Rabbit
Isotype:	IgG, kappa
Clonality:	Monoclonal
Immunogen:	Peptide "GISAFPESDNLFK", derived from the Ubiquitin-conjugating enzyme E2C, conjugated to KLH.
Specificity:	Recognises human UBE2C.
	Original data characterizing this antibody may be found <a href="#">here</a> .
Formulation:	PBS with 0.02% Proclin 300.
Concentration:	lot specific
Conjugation:	Unconjugated
Storage:	Please store at 4°C for up to 3 months. For longer storage, aliquot and store at -20°C. Avoid freeze and thaw cycles.
Stability:	3 years from dispatch.
Gene Name:	ubiquitin conjugating enzyme E2 C
Database Link:	<a href="#">Entrez Gene 11065 Human O00762</a>
Synonyms:	dj447f3.2; UBCH10



[View online »](#)

**Product images:**


Flow cytometry using the anti-UBE2C antibody SAIC-41A-1 (TA385913). Paraformaldehyde fixed MCF7 cells permeabilized with 0.5% Triton were stained with anti-unknown specificity antibody ([TA385792]; isotype control, black line) or the rabbit IgG version of SAIC-41A-1 (TA385913, blue line) at a dilution of 1:100 for 1h at RT. After washing, the bound antibody was detected using a goat anti-rabbit IgG AlexaFluor® 488 antibody at a dilution of 1:1000 and cells analyzed using a FACSCanto flow-cytometer.



Western Blot using anti-UBE2C antibody SAIC-41A-1 (TA385913). Caco-2(A) (0.3µg/ml), MCF7(B) (1ug/ml) and HeLa(C) (1ug/ml) cell lysates (35µg protein in RIPA buffer) were resolved on a SDS PAGE gel and blots were probed with the chimeric rabbit version of SAIC-41A-1 (TA385913) before detection using an anti-rabbit secondary antibody. A primary incubation of 1h was used and protein was detected by chemiluminescence.