

Product datasheet for **TA385910**

Ezrin (EZR) Rabbit Monoclonal Antibody [Clone ID: SAIC-37C-23]

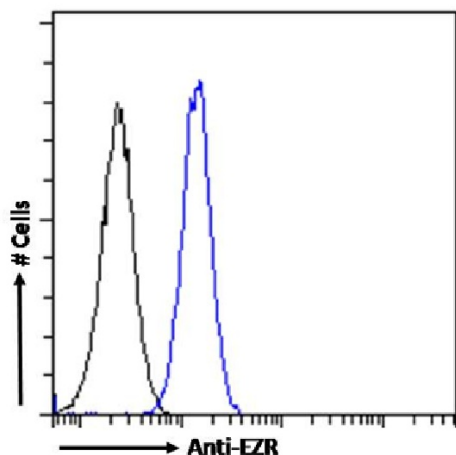
Product data:

| | |
|----------------|-------------------------------------------------------------------------------------------------------------------------------------------------------------|
| Product Type: | Primary Antibodies |
| Clone Name: | SAIC-37C-23 |
| Applications: | WB |
| Reactivity: | Human |
| Host: | Rabbit |
| Isotype: | IgG, kappa |
| Clonality: | Monoclonal |
| Immunogen: | The KLH-conjugated peptide "SGYLSSER" derived from Ezrin, a protein likely involved in connections of major cytoskeletal structures to the plasma membrane. |
| Specificity: | Recognises human EZR. Original data characterizing this antibody may be found here . |
| Formulation: | PBS with 0.02% Proclin 300. |
| Concentration: | lot specific |
| Conjugation: | Unconjugated |
| Storage: | Please store at 4°C for up to 3 months. For longer storage, aliquot and store at -20°C. Avoid freeze and thaw cycles. |
| Stability: | 3 years from dispatch. |
| Gene Name: | ezrin |
| Database Link: | Entrez Gene 7430 Human P15311 |
| Synonyms: | CVIL; CVL; Cytovillin; DKFZp762H157; ezrin; FLJ26216; MGC1584; p81; VIL2; Villin-2 |



[View online »](#)

Product images:



Flow cytometry using the Anti-EZR antibody SAIC-37C-23 (TA385910). Paraformaldehyde fixed HeLa cells permeabilized with 0.5% Triton were stained with anti-unknown specificity antibody ([TA385792]; isotype control, black line) or the rabbit IgG version of SAIC-37C-23 (TA385910, blue line) at a dilution of 1:100 for 1h at RT. After washing, the bound antibody was detected using a goat anti-rabbit IgG AlexaFluor® 488 antibody at a dilution of 1:1000 and cells analyzed using a FACSCanto flow-cytometer.