

## Product datasheet for **TA385909**

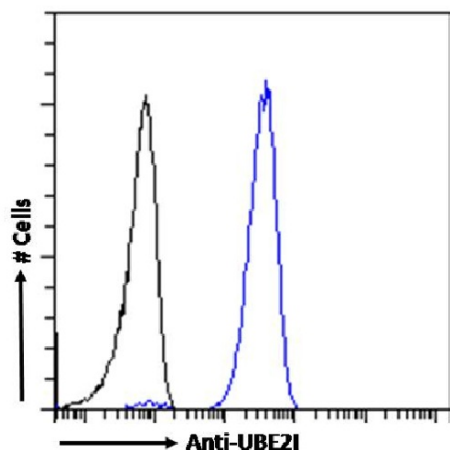
### UBE2I Rabbit Monoclonal Antibody [Clone ID: SAIC-36A-9]

#### Product data:

Product Type:	Primary Antibodies
Clone Name:	SAIC-36A-9
Applications:	ELISA, WB
Reactivity:	Human
Host:	Rabbit
Isotype:	IgG, kappa
Clonality:	Monoclonal
Immunogen:	Peptide "GLFIIDGK", derived from the SUMO-conjugating enzyme UBC9, conjugated to KLH.
Specificity:	Recognises human UBE2I.
	Original data characterizing this antibody may be found <a href="#">here</a> .
Formulation:	PBS with 0.02% Proclin 300.
Concentration:	lot specific
Conjugation:	Unconjugated
Storage:	Please store at 4°C for up to 3 months. For longer storage, aliquot and store at -20°C. Avoid freeze and thaw cycles.
Stability:	3 years from dispatch.
Gene Name:	ubiquitin conjugating enzyme E2 I
Database Link:	<a href="#">Entrez Gene 7329 Human P63279</a>
Synonyms:	C358B7.1; OTTHUMP00000198126; OTTHUMP00000198127; P18; UBC9; UBCE9



[View online »](#)

**Product images:**

Flow cytometry using the Anti-UBE2I antibody SAIC-36A-9 (TA385909). Paraformaldehyde fixed Jurkat cells permeabilized with 0.5% Triton were stained with anti-unknown specificity antibody ([TA385792]; isotype control, black line) or the rabbit IgG version of SAIC-36A-9 (TA385909, blue line) at a dilution of 1:100 for 1h at RT. After washing, the bound antibody was detected using a goat anti-rabbit IgG AlexaFluor® 488 antibody at a dilution of 1:1000 and cells analyzed using a FACSCanto flow-cytometer.