

Product datasheet for **TA385904**

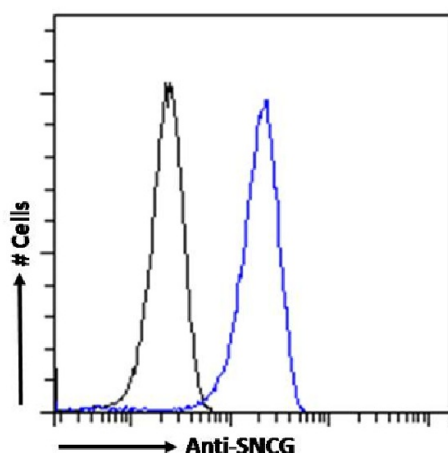
gamma Synuclein (SNCG) Rabbit Monoclonal Antibody [Clone ID: SAIC-31A-10]

Product data:

Product Type:	Primary Antibodies
Clone Name:	SAIC-31A-10
Applications:	ELISA, WB
Reactivity:	Human
Host:	Rabbit
Isotype:	IgG, kappa
Clonality:	Monoclonal
Immunogen:	The KLH-conjugated peptide "YLAPSGPSGTLK", derived from Gamma-synuclein. Gamma-synuclein plays a role in neurofilament network integrity.
Specificity:	Recognises human SNCG.
	Original data characterizing this antibody may be found
Formulation:	PBS with 0.02% Proclin 300.
Concentration:	lot specific
Conjugation:	Unconjugated
Storage:	Please store at 4°C for up to 3 months. For longer storage, aliquot and store at -20°C. Avoid freeze and thaw cycles.
Stability:	3 years from dispatch.
Gene Name:	synuclein gamma
Database Link:	Entrez Gene 6623 Human Q6FHG5
Synonyms:	BCSG1; PERSYN; PRSN; SR; Synoretin



[View online »](#)

Product images:

Flow cytometry using the Anti-SNCG antibody SAIC-31A-10 (TA385904). Paraformaldehyde fixed U251 cells permeabilized with 0.5% Triton were stained with anti-unknown specificity antibody ([TA385792]; isotype control, black line) or the rabbit IgG version of SAIC-31A-10 (TA385904, blue line) at a dilution of 1:100 for 1h at RT. After washing, the bound antibody was detected using a goat anti-rabbit IgG AlexaFluor® 488 antibody at a dilution of 1:1000 and cells analyzed using a FACSCanto flow-cytometer.