

## Product datasheet for **TA385903**

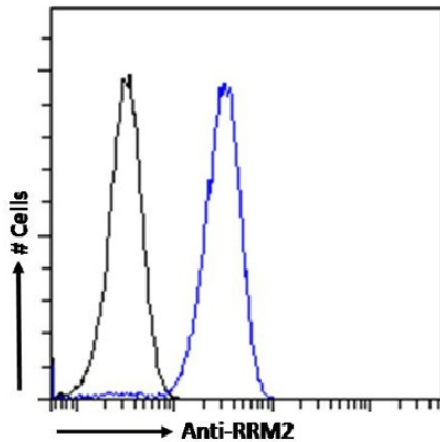
### RRM2 Rabbit Monoclonal Antibody [Clone ID: SAIC-30C-18]

#### Product data:

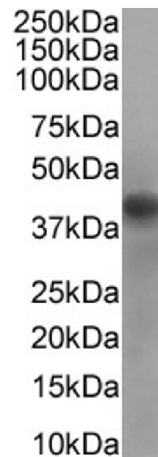
Product Type:	Primary Antibodies
Clone Name:	SAIC-30C-18
Applications:	ELISA, WB
Reactivity:	Human
Host:	Rabbit
Isotype:	IgG, kappa
Clonality:	Monoclonal
Immunogen:	The KLH-conjugated peptide "IEQEFLTEALPVK" derived from Ribonucleoside-diphosphate reductase subunit M2 (RRM2). RRM2 provides precursors required for DNA synthesis.
Specificity:	Recognises human RRM2.  Original data characterizing this antibody may be found <a href="#">here</a> .
Formulation:	PBS with 0.02% Proclin 300.
Concentration:	lot specific
Conjugation:	Unconjugated
Storage:	Please store at 4°C for up to 3 months. For longer storage, aliquot and store at -20°C. Avoid freeze and thaw cycles.
Stability:	3 years from dispatch.
Gene Name:	ribonucleotide reductase regulatory subunit M2
Database Link:	<a href="#">Entrez Gene 6241 Human P31350</a>
Synonyms:	R2; RR2; RR2M



[View online »](#)

**Product images:**


Flow cytometry using the Anti-RRM2 antibody SAIC-30C-18 (TA385903). Paraformaldehyde fixed HeLa cells permeabilized with 0.5% Triton were stained with anti-unknown specificity antibody ([TA385792]; isotype control, black line) or the rabbit IgG version of SAIC-30C-18 (TA385903, blue line) at a dilution of 1:100 for 1h at RT. After washing, the bound antibody was detected using a goat anti-rabbit IgG AlexaFluor® 488 antibody at a dilution of 1:1000 and cells analyzed using a FACSCanto flow-cytometer.



Western Blot using anti-RRM2 antibody SAIC-30C-18 (TA385903). Jurkat cell lysates (35µg protein in RIPA buffer) were resolved on a SDS PAGE gel and blots were probed with the chimeric rabbit version of SAIC-30C-18 (TA385903) at 1 µg/ml before detection using an anti-rabbit secondary antibody. A primary incubation of 1h was used and protein was detected by chemiluminescence.