

Product datasheet for **TA385896**

Galectin 1 (LGALS1) Rabbit Monoclonal Antibody [Clone ID: SAIC-25B-112]

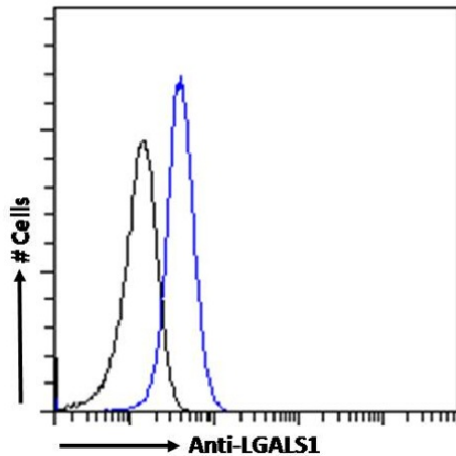
Product data:

Product Type:	Primary Antibodies
Clone Name:	SAIC-25B-112
Reactivity:	Human
Host:	Rabbit
Isotype:	IgG, kappa
Clonality:	Monoclonal
Immunogen:	The KLH-conjugated peptide "SFVLNLGK" derived from Galectin 1. Galectin 1 binds beta-galactoside and other complex carbohydrates and may regulate apoptosis, cell proliferation and cell differentiation.
Specificity:	Recognises human LGALS1. Original data characterizing this antibody may be found here .
Formulation:	PBS with 0.02% Proclin 300.
Concentration:	lot specific
Conjugation:	Unconjugated
Storage:	Please store at 4°C for up to 3 months. For longer storage, aliquot and store at -20°C. Avoid freeze and thaw cycles.
Stability:	3 years from dispatch.
Gene Name:	galectin 1
Database Link:	Entrez Gene 3956 Human P09382
Synonyms:	DKFZp686E23103; GAL1; galaptin; galectin-1; GBP; HBL; HPL



[View online »](#)

Product images:



Flow cytometry using the Anti-LGALS1 antibody SAIC-25B-112 (TA385896). Paraformaldehyde fixed HeLa cells permeabilized with 0.5% Triton were stained with anti-unknown specificity antibody ([TA385792]; isotype control, black line) or the rabbit IgG version of SAIC-25B-112 (TA385896, blue line) at a dilution of 1:100 for 1h at RT. After washing, the bound antibody was detected using a goat anti-rabbit IgG AlexaFluor® 488 antibody at a dilution of 1:1000 and cells analyzed using a FACSCanto flow-cytometer.



Western Blot using anti-LGALS1 antibody SAIC-25B-112 (TA385896). U251 cell lysates (35µg protein in RIPA buffer) were resolved on a SDS PAGE gel and blots were probed with the chimeric rabbit version of SAIC-25B-112 (TA385896) at 0.1 µg/ml before detection using an anti-rabbit secondary antibody. A primary incubation of 1h was used and protein was detected by chemiluminescence.