

Product datasheet for **TA385891**

HSP27 (HSPB1) Rabbit Monoclonal Antibody [Clone ID: SAIC-23B-22]

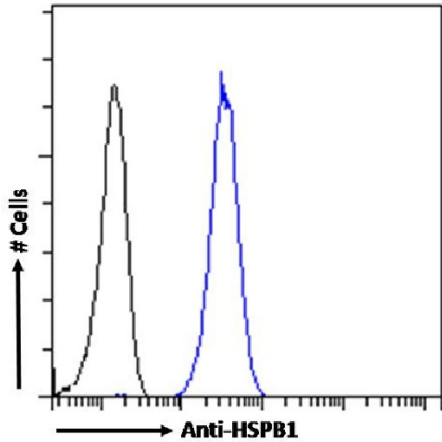
Product data:

Product Type:	Primary Antibodies
Clone Name:	SAIC-23B-22
Reactivity:	Human
Host:	Rabbit
Isotype:	IgG, kappa
Clonality:	Monoclonal
Immunogen:	Peptide "DGVVEITGK" derived from Heat shock protein beta-1, involved in stress resistance and actin organisation, conjugated to KLH.
Specificity:	Recognises human HSPB1. Original data characterizing this antibody may be found here .
Formulation:	PBS with 0.02% Proclin 300.
Concentration:	lot specific
Conjugation:	Unconjugated
Storage:	Please store at 4°C for up to 3 months. For longer storage, aliquot and store at -20°C. Avoid freeze and thaw cycles.
Stability:	3 years from dispatch.
Gene Name:	heat shock protein family B (small) member 1
Database Link:	Entrez Gene 3315 Human P04792
Synonyms:	CMT2F; DKFZp586P1322; HMN2B; HS.76067; Hsp25; HSP27; HSP28; SRP27

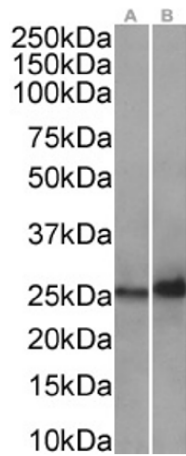


[View online »](#)

Product images:



Flow cytometry using the Anti-HSPB1 antibody SAIC-23B-22 (TA385891). Paraformaldehyde fixed HeLa cells permeabilized with 0.5% Triton were stained with anti-unknown specificity antibody ([TA385792]; isotype control, black line) or the rabbit IgG version of SAIC-23B-22 (TA385891, blue line) at a dilution of 1:100 for 1h at RT. After washing, the bound antibody was detected using a goat anti-rabbit IgG AlexaFluor® 488 antibody at a dilution of 1:1000 and cells analyzed using a FACSCanto flow-cytometer.



Western Blot using anti-HSPB1 antibody SAIC-23B-22 (TA385891). Human heart(A) (0.1µg/ml) and human placenta(B) (0.3ug/ml) tissue lysates (35µg protein in RIPA buffer) were resolved on a SDS PAGE gel and blots were probed with the chimeric rabbit version of SAIC-23B-22 (TA385891), before detection using an anti-rabbit secondary antibody. A primary incubation of 1h was used and protein was detected by chemiluminescence.