

Product datasheet for **TA385890**

GST3 (GSTP1) Rabbit Monoclonal Antibody [Clone ID: SAIC-22D-22]

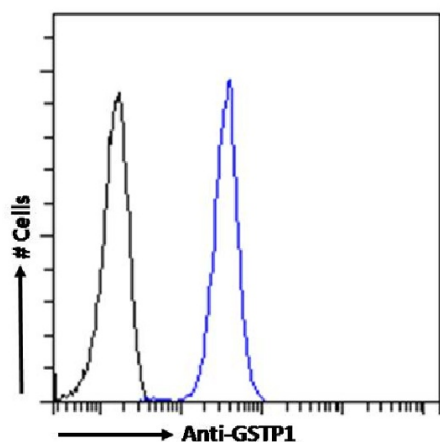
Product data:

Product Type:	Primary Antibodies
Clone Name:	SAIC-22D-22
Reactivity:	Human
Host:	Rabbit
Isotype:	IgG, kappa
Clonality:	Monoclonal
Immunogen:	Peptide "YISLIYTNYEAGK" derived from Glutathione S-transferase P conjugated to KLH.
Specificity:	Recognises human GSTP1.
	Original data characterizing this antibody may be found here .
Formulation:	PBS with 0.02% Proclin 300.
Concentration:	lot specific
Conjugation:	Unconjugated
Storage:	Please store at 4°C for up to 3 months. For longer storage, aliquot and store at -20°C. Avoid freeze and thaw cycles.
Stability:	3 years from dispatch.
Gene Name:	glutathione S-transferase pi 1
Database Link:	Entrez Gene 2950 Human P09211
Synonyms:	DFN7; FAES3; GST3; GSTP; GSTP1-1; PI



[View online »](#)

Product images:



Flow cytometry using the Anti-GSTP1 antibody SAIC-22D-22 (TA385890). Paraformaldehyde fixed HeLa cells permeabilized with 0.5% Triton were stained with anti-unknown specificity antibody ([TA385792]; isotype control, black line) or the rabbit IgG version of SAIC-22D-22 (TA385890, blue line) at a dilution of 1:100 for 1h at RT. After washing, the bound antibody was detected using a goat anti-rabbit IgG AlexaFluor® 488 antibody at a dilution of 1:1000 and cells analyzed using a FACSCanto flow-cytometer.