

## Product datasheet for **TA385889**

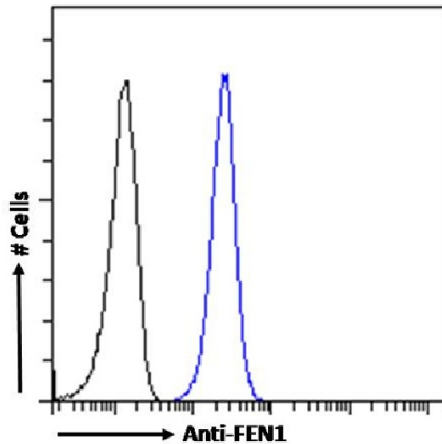
### FEN1 Rabbit Monoclonal Antibody [Clone ID: SAIC-21C-4]

#### Product data:

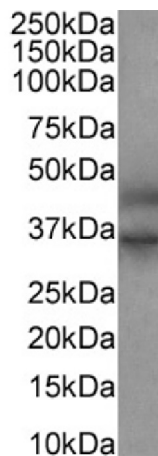
Product Type:	Primary Antibodies
Clone Name:	SAIC-21C-4
Reactivity:	Human
Host:	Rabbit
Isotype:	IgG, kappa
Clonality:	Monoclonal
Immunogen:	The KLH-cojugated peptide "SIEEIVR", derived from the Flap endonuclease 1 involved in DNA replication and repair.
Specificity:	Recognises human FEN1.  Original data characterizing this antibody may be found <a href="#">here</a> .
Formulation:	PBS with 0.02% Proclin 300.
Concentration:	lot specific
Conjugation:	Unconjugated
Storage:	Please store at 4°C for up to 3 months. For longer storage, aliquot and store at -20°C. Avoid freeze and thaw cycles.
Stability:	3 years from dispatch.
Gene Name:	flap structure-specific endonuclease 1
Database Link:	<a href="#">Entrez Gene 2237 Human P39748</a>
Synonyms:	FEN-1; hFEN-1; MF1; RAD2



[View online »](#)

**Product images:**


Flow cytometry using the Anti-FEN1 antibody SAIC-21C-4 (TA385889). Paraformaldehyde fixed HeLa cells permeabilized with 0.5% Triton were stained with anti-unknown specificity antibody ([TA385792]; isotype control, black line) or the rabbit IgG version of SAIC-21C-4 (TA385889, blue line) at a dilution of 1:100 for 1h at RT. After washing, the bound antibody was detected using a goat anti-rabbit IgG AlexaFluor® 488 antibody at a dilution of 1:1000 and cells analyzed using a FACSCanto flow-cytometer.



Western Blot using anti-FEN1 antibody SAIC-21C-4 (TA385889). Human colon tissue lysates (35µg protein in RIPA buffer) were resolved on a SDS PAGE gel and blots were probed with the chimeric rabbit version of SAIC-21C-4 (TA385889) at 1 µg/ml before detection using an anti-rabbit secondary antibody. A primary incubation of 1h was used and protein was detected by chemiluminescence.