

Product datasheet for **TA385887**

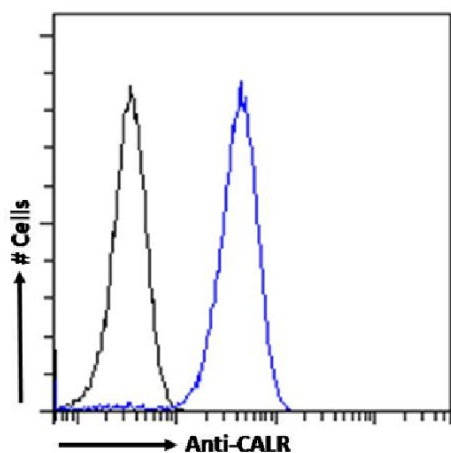
Calreticulin (CALR) Rabbit Monoclonal Antibody [Clone ID: SAIC-16D-6B9]

Product data:

Product Type:	Primary Antibodies
Clone Name:	SAIC-16D-6B9
Applications:	ELISA, WB
Reactivity:	Human
Host:	Rabbit
Isotype:	IgG, kappa
Clonality:	Monoclonal
Immunogen:	Peptide "GLQTSQDAR", derived from the calcium-binding protein chaperone Calreticulin, conjugated to KLH.
Specificity:	Recognises human CALR.
	Original data characterizing this antibody may be found here .
Formulation:	PBS with 0.02% Proclin 300.
Concentration:	lot specific
Conjugation:	Unconjugated
Storage:	Please store at 4°C for up to 3 months. For longer storage, aliquot and store at -20°C. Avoid freeze and thaw cycles.
Stability:	3 years from dispatch.
Gene Name:	calreticulin
Database Link:	Entrez Gene 811 Human P27797
Synonyms:	Calregulin; calreticulin; cC1qR; CRP55; CRT; CRTC; ERp60; FLJ26680; grp60; HACBP; RO; SSA



[View online »](#)

Product images:

Flow cytometry using the Anti-CALR antibody SAIC-16D-6B9 (TA385887). Paraformaldehyde fixed HeLa cells permeabilized with 0.5% Triton were stained with anti-unknown specificity antibody ([TA385792]; isotype control, black line) or the rabbit IgG version of SAIC-16D-6B9 (TA385887, blue line) at a dilution of 1:100 for 1h at RT. After washing, the bound antibody was detected using a goat anti-rabbit IgG AlexaFluor® 488 antibody at a dilution of 1:1000 and cells analyzed using a FACSCanto flow-cytometer.