

## Product datasheet for **TA385882**

### Her2 (ERBB2) Rabbit Monoclonal Antibody [Clone ID: SAIC-02A-7]

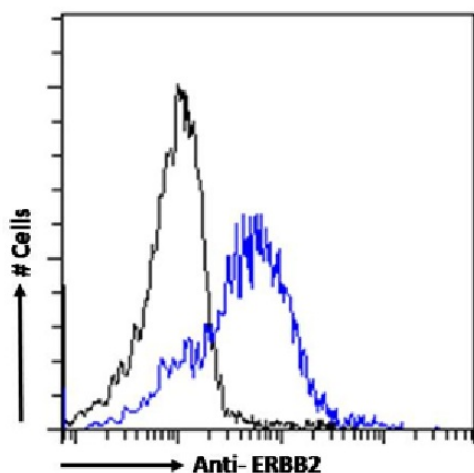
#### Product data:

Product Type:	Primary Antibodies
Clone Name:	SAIC-02A-7
Applications:	ELISA, WB
Reactivity:	Human
Host:	Rabbit
Isotype:	IgG, kappa
Clonality:	Monoclonal
Immunogen:	Peptide "GLQSLPTHDPSPQR" derived from the receptor tyrosine kinase erbB2 conjugated to KLH.
Specificity:	Recognises human ERBB2.
	Original data characterizing this antibody may be found <a href="#">here</a> .
Formulation:	PBS with 0.02% Proclin 300.
Concentration:	lot specific
Conjugation:	Unconjugated
Storage:	Please store at 4°C for up to 3 months. For longer storage, aliquot and store at -20°C. Avoid freeze and thaw cycles.
Stability:	3 years from dispatch.
Gene Name:	erb-b2 receptor tyrosine kinase 2
Database Link:	<a href="#">Entrez Gene 2064 Human P04626</a>
Synonyms:	C-erbB-2; CD340; erbB-2; HER-2; HER-2/neu; HER2; herstatin; NEU; NGL; p185erbB2; TKR1



[View online »](#)

## Product images:



Flow-cytometry using the anti-ERBB2 antibody SAIC-02A-7 (TA385882). MCF7 cells were stained with anti-Fluorescein IgG antibody (clone 4-4-20; isotype control, black line) or the rabbit IgG1 version of SAIC-02A-7 (TA385882, blue line) at a dilution of 1:100 for 1h at RT. After washing, bound antibody was detected using a goat anti-mouse IgG AlexaFluor® 488 antibody at a dilution of 1:1000 and cells analyzed using a FACSCanto flow-cytometer.