

## Product datasheet for **TA385868**

### CD38 Rabbit Monoclonal Antibody [Clone ID: AT13/5]

#### Product data:

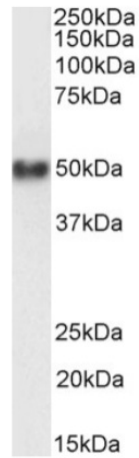
Product Type:	Primary Antibodies
Clone Name:	AT13/5
Applications:	FC
Reactivity:	Human
Host:	Rabbit
Isotype:	IgG, kappa
Clonality:	Monoclonal
Immunogen:	Namalwa cells emulsified in CFA.
Specificity:	<p>Binds specifically to human CD38, an approximately 45 kDa type II transmembrane protein, expressed on essentially all pre-B lymphocytes, plasma cells, and thymocytes. Also present on activated T lymphocytes, natural killer (NK) lymphocytes, myeloblasts, and erythroblasts. Bimodally expressed during B cell development, modulating from high in immature cells to low in intermediate ones and back to high on mature B cells. This antibody competes with clone HB7 (Ab00128) (Ellis 1995) which has been shown to bind to an epitope between amino acids 273-285).</p> <p>The antibody binds to CD38, a glycoprotein on the surface of various immune cells that catalyzes the hydrolysis of cyclic ADP-ribose to NAD<sup>+</sup> and ADP-ribose.</p>
Formulation:	PBS with 0.02% Proclin 300.
Concentration:	lot specific
Conjugation:	Unconjugated
Storage:	Please store at 4°C for up to 3 months. For longer storage, aliquot and store at -20°C. Avoid freeze and thaw cycles.
Stability:	3 years from dispatch.
Gene Name:	CD38 molecule
Database Link:	<a href="#">Entrez Gene 952 Human P28907</a>
Synonyms:	T10



[View online »](#)

**Note:** This chimeric rabbit antibody was made using the variable domain sequences of the original Mouse IgG1 format, for improved compatibility with existing reagents, assays and techniques.

### Product images:



Western Blot using anti-CD38 antibody AT13/5 (TA385868) Human spleen lysate samples (35 $\mu$ g protein in RIPA buffer) were resolved on a 10% SDS PAGE gel and blots probed with the chimeric rabbit version of AT13/5 (TA385868) at 1  $\mu$ g/ml before detection using an anti-rabbit secondary antibody. A primary incubation of 1h was used and protein was detected by chemiluminescence. The expected running size for CD38 is 34.3kDa, but this protein is glycosylated at several residues. TA385868 successfully detected CD38 in human spleen lysate.