

Product datasheet for **TA385866**

CD32B (FCGR2B) Rabbit Monoclonal Antibody [Clone ID: AT10]

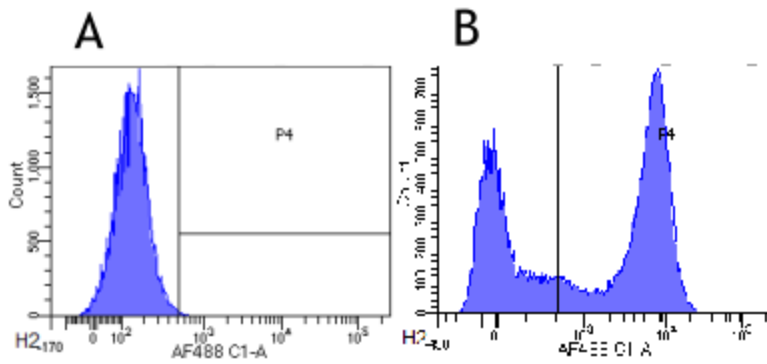
Product data:

Product Type:	Primary Antibodies
Clone Name:	AT10
Applications:	FC
Reactivity:	Human
Host:	Rabbit
Isotype:	IgG, kappa
Clonality:	Monoclonal
Immunogen:	Human CD32.
Specificity:	Binds specifically to human CD32.
	The antibody binds to CD32, a surface receptor protein with a low affinity for IgG antibodies.
Formulation:	PBS with 0.02% Proclin 300.
Concentration:	lot specific
Conjugation:	Unconjugated
Storage:	Please store at 4°C for up to 3 months. For longer storage, aliquot and store at -20°C. Avoid freeze and thaw cycles.
Stability:	3 years from dispatch.
Gene Name:	Fc fragment of IgG receptor IIb
Database Link:	Entrez Gene 2213 Human P31994
Synonyms:	CD32; CD32B; CDw32; Fc-gamma-RIIb; FCG2; FCGR2; FcRII-b; IGFR2
Note:	This chimeric rabbit antibody was made using the variable domain sequences of the original Mouse IgG1 format, for improved compatibility with existing reagents, assays and techniques.



[View online »](#)

Product images:



Flow-cytometry using anti-CD32 antibody AT10 (TA385866) Human leukocytes were stained with an isotype control ([TA385644], panel A) or the rabbit-chimeric version of AT10 (TA385866, panel B) at a concentration of 1 µg/ml for 30 mins at RT. After washing, bound antibody was detected using a AF488 conjugated donkey anti-rabbit antibody and cells analysed on a FACSCanto flow-cytometer.