

Product datasheet for **TA385858**

CD33 Rabbit Monoclonal Antibody [Clone ID: hP67.6 (Gemtuzumab)]

Product data:

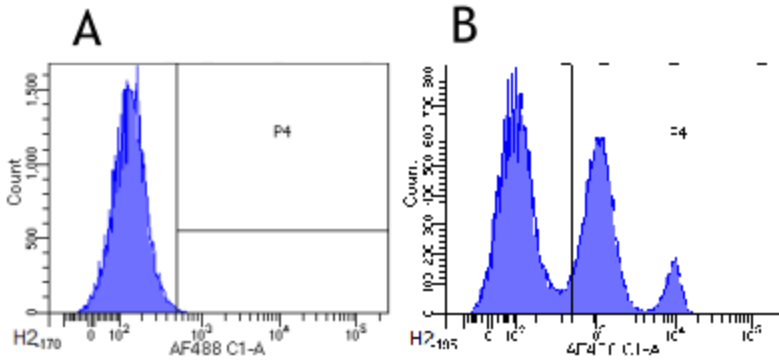
Product Type:	Primary Antibodies
Clone Name:	hP67.6 (Gemtuzumab)
Applications:	FC, IF
Reactivity:	Human
Host:	Rabbit
Isotype:	IgG, kappa
Clonality:	Monoclonal
Immunogen:	Gemtuzumab was generated by humanization of the murine P67.6 clone, raised against CD33-transfected FMY9S5 cells of human origin. CD33 is a transmembrane receptor expressed on predominantly on cells of the myeloid lineage, but it can also be found on some lymphoid cells.
Specificity:	Recognises human CD33. A human IgG4 variant conjugated to derivative of the cytotoxic drug calicheamicin gamma 1, N-acetylcalicheamicin dimethyl hydrazide, has been used as a therapeutic against acute myeloid leukemia. This antibody may also be used in flow cytometry and immunofluorescence.
Formulation:	PBS with 0.02% Proclin 300.
Concentration:	lot specific
Conjugation:	Unconjugated
Storage:	Please store at 4°C for up to 3 months. For longer storage, aliquot and store at -20°C. Avoid freeze and thaw cycles.
Stability:	3 years from dispatch.
Gene Name:	CD33 molecule
Database Link:	Entrez Gene 945 Human P20138
Synonyms:	FLJ00391; gp67; p67; SIGLEC-3; SIGLEC3



[View online »](#)

Note: This chimeric rabbit antibody was made using the variable domain sequences of the original Human IgG4 format, for improved compatibility with existing reagents, assays and techniques.

Product images:



Flow-cytometry using anti-CD33 antibody hP67.6 (Gemtuzumab) (TA385858) Human leukocytes were stained with an isotype control ([TA385644], panel A) or the rabbit-chimeric version of hP67.6 (Gemtuzumab) (TA385858, panel B) at a concentration of 1 µg/ml for 30 mins at RT. After washing, bound antibody was detected using a AF488 conjugated donkey anti-rabbit antibody and cells analysed on a FACSCanto flow-cytometer.