

Product datasheet for **TA385851**

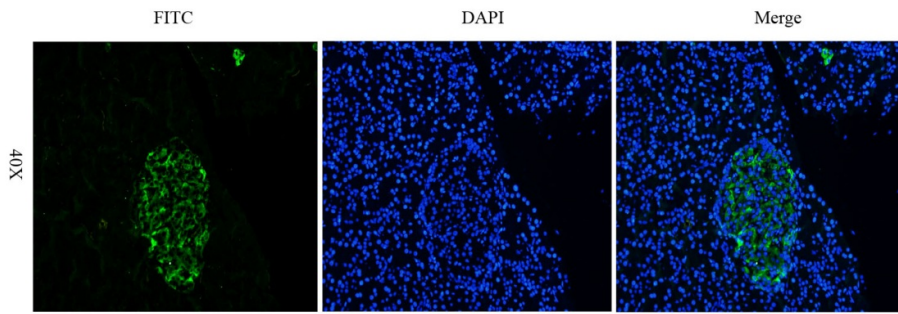
CEA Human Monoclonal Antibody [Clone ID: Arcitumomab]

Product data:

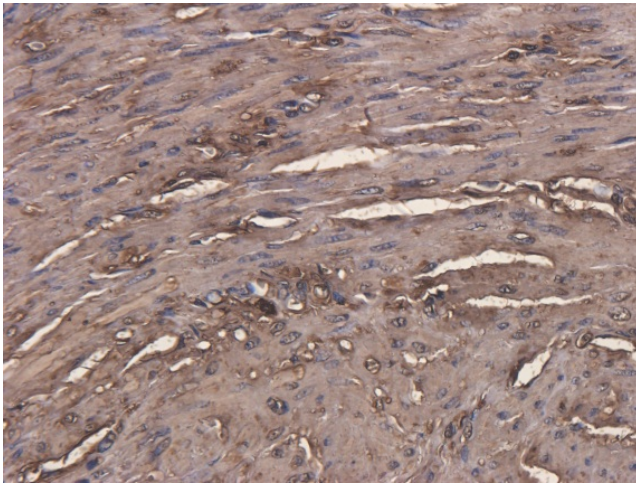
Product Type:	Primary Antibodies
Clone Name:	Arcitumomab
Applications:	FC, IHC
Reactivity:	Human
Host:	Human
Isotype:	IgG1, kappa
Clonality:	Monoclonal
Immunogen:	Carcinoembryonic antigen (CEA) describes a set of highly related glycoproteins involved in cell adhesion normally produced in gastrointestinal tissue during fetal development, but only at very low levels in adults.
Specificity:	Recognises human carcinoembryonic antigen. This antibody binds to carcinoembryonic antigen and was used in the diagnosis of mammary carcinomas.
Formulation:	PBS with 0.02% Proclin 300.
Concentration:	lot specific
Conjugation:	Unconjugated
Storage:	Please store at 4°C for up to 3 months. For longer storage, aliquot and store at -20°C. Avoid freeze and thaw cycles.
Stability:	3 years from dispatch.
Database Link:	Q13984
Note:	NOT FOR THERAPEUTIC USE - This is a research-grade biosimilar.



[View online »](#)

Product images:

Immunofluorescent staining of rat pancreas using anti-CEA antibody TA385851. Formaldehyde-fixed rat pancreas slices were stained with TA385851 at 5 $\mu\text{g}/\text{ml}$ and detected with a FITC-conjugated secondary antibody. TA385851 shows cross-reactivity with rat.



Immunohistochemical staining of human endometrial cancer using anti-CEA antibody TA385851. Formalin fixed human endometrial cancer slices were stained with a TA385851 at 5 $\mu\text{g}/\text{ml}$.