

Product datasheet for **TA385847**

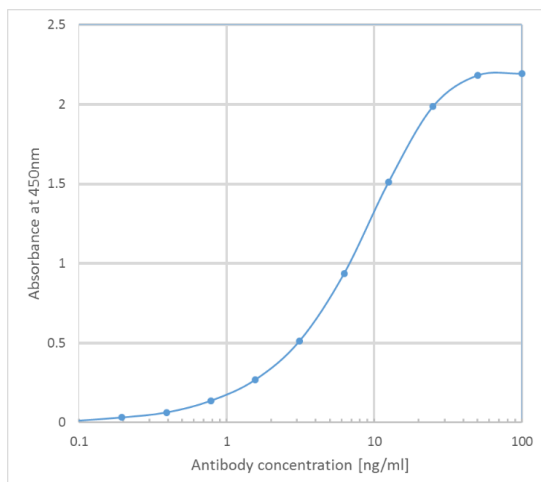
EGFR Human Monoclonal Antibody [Clone ID: C225 (Cetuximab)]

Product data:

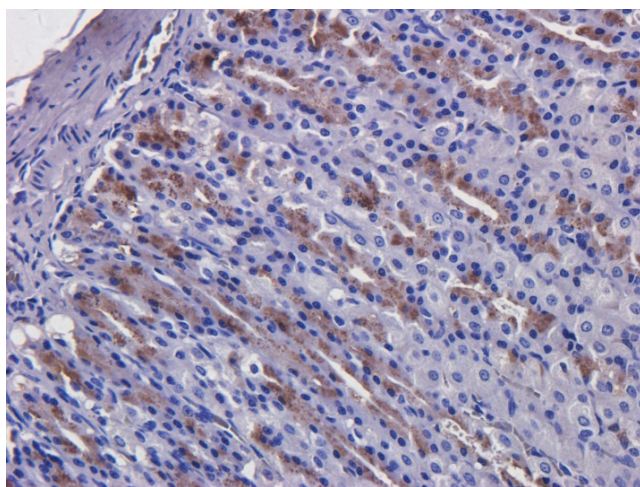
Product Type:	Primary Antibodies
Clone Name:	C225 (Cetuximab)
Applications:	BI, FC
Reactivity:	Human
Host:	Human
Isotype:	IgG1, kappa
Clonality:	Monoclonal
Immunogen:	The epidermal growth factor receptor is the cell-surface receptor for members of the epidermal growth factor family (EGF-family) of extracellular protein ligands.
Specificity:	Recognises human EGFR.
Formulation:	PBS with 0.02% Proclin 300.
Concentration:	lot specific
Conjugation:	Unconjugated
Storage:	Please store at 4°C for up to 3 months. For longer storage, aliquot and store at -20°C. Avoid freeze and thaw cycles.
Stability:	3 years from dispatch.
Gene Name:	epidermal growth factor receptor
Database Link:	Entrez Gene 1956 Human P00533
Synonyms:	ERBB; ERBB1; HER1; mENA; PIG61
Note:	NOT FOR THERAPEUTIC USE - This is a research-grade biosimilar.



[View online »](#)

Product images:

Binding curve of anti-EGFR antibody to EGFR-Fc fusion protein ELISAPlate coated with human EGFR-Fc at a concentration of 2.0 mg/ml. A 2-fold serial dilution from 100 to 0.1 ng/ml was performed using HRP labelled cetuximab human IgG1 (TA385847).



Immunohistochemical staining of rat stomach tissue using anti-EGFR antibody (TA385847) C225 (Cetuximab) Anti-EGFR staining of formaldehyde fixed paraffin embedded rat stomach tissue, at 40x magnification. The human IgG1-chimeric version of C225 (TA385847) was used to stain samples at a concentration of 5 µg/ml.