

## Product datasheet for **TA385837**

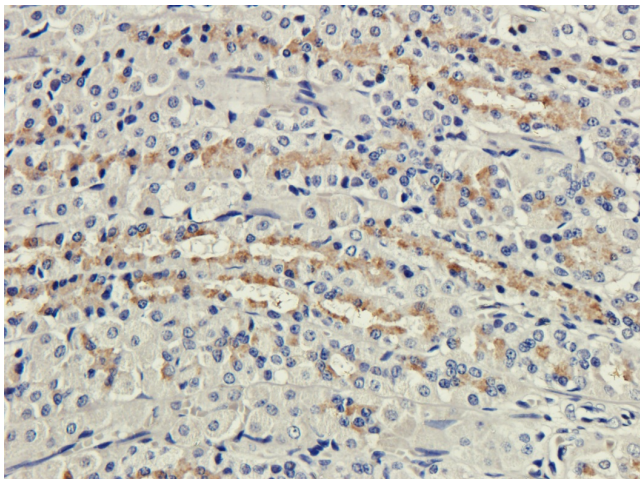
### CD35 (CR1) Rabbit Monoclonal Antibody [Clone ID: 8C12]

#### Product data:

Product Type:	Primary Antibodies
Clone Name:	8C12
Applications:	FC, IHC, IP, WB
Reactivity:	Mouse
Host:	Rabbit
Isotype:	IgG, kappa
Clonality:	Monoclonal
Immunogen:	Purified murine CR1 protein.
Specificity:	Recognises an epitope on CD35 (CR1, 190 kDa), but not on CD21 (CR2, 145-150 kDa), which are alternative splice variants of primary Cr2 gene transcripts.  This antibody recognises murine CD35, expressed on the majority of peripheral B-cells and peritoneal macrophages and upon fMet-Leu-Phe stimulation also on
Formulation:	PBS with 0.02% Proclin 300.
Concentration:	lot specific
Conjugation:	Unconjugated
Storage:	Please store at 4°C for up to 3 months. For longer storage, aliquot and store at -20°C. Avoid freeze and thaw cycles.
Stability:	3 years from dispatch.
Gene Name:	complement component 3b/4b receptor 1 (Knops blood group)
Database Link:	<a href="#">P17927</a>
Synonyms:	C3BR; C4BR; CD35; KN
Note:	This chimeric rabbit antibody was made using the variable domain sequences of the original Rat IgG2a format, for improved compatibility with existing reagents, assays and techniques.



[View online »](#)

**Product images:**

Immunohistochemical staining of rat stomach using anti-Complement receptor 1 antibody TA385837. Formalin fixed rat stomach slices were stained with TA385837 at 3 µg/ml.