

Product datasheet for **TA385832**

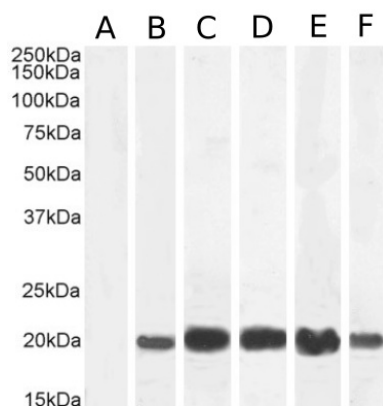
IL2 Rabbit Monoclonal Antibody [Clone ID: LNKB-2]

Product data:

Product Type:	Primary Antibodies
Clone Name:	LNKB-2
Applications:	ELISA, IF, IP, WB
Reactivity:	Human
Host:	Rabbit
Isotype:	IgG, kappa
Clonality:	Monoclonal
Specificity:	Recognises human Interleukin 2.
Formulation:	PBS with 0.02% Proclin 300.
Concentration:	lot specific
Conjugation:	Unconjugated
Storage:	Please store at 4°C for up to 3 months. For longer storage, aliquot and store at -20°C. Avoid freeze and thaw cycles.
Stability:	3 years from dispatch.
Gene Name:	interleukin 2
Database Link:	Entrez Gene 3558 Human P60568
Synonyms:	aldesleukin; IL-2; interleukin-2; lymphokine; TCGF
Note:	This chimeric rabbit antibody was made using the variable domain sequences of the original murine IgG1 format, for improved compatibility with existing reagents, assays and techniques.



[View online »](#)

Product images:

Western Blot using anti-IL-2 antibody LNKB-2 (TA385832) Untreated human peripheral blood monocyte (PBM) (A), PMA/Ionomycin-treated PBM (B), human spleen (C), human thymus (D), Jurkat cell (E) and Molt4 cell (F) lysate samples (35 μ g protein in RIPA buffer) were resolved on a 15% SDS PAGE gel and blots probed with the rabbit IgG-chimeric version of LNKB-2 (TA385832) at 1 μ g/ml (A, B) or 0.1 μ g/ml (C-F) before detection using an anti-rabbit secondary antibody. Protein was detected by chemiluminescence. The expected running size for IL-2 is 17.6kDa. TA385832 successfully detected IL-2 in multiple human tissue / cell samples.