

Product datasheet for **TA385827**

CCR3 Rabbit Monoclonal Antibody [Clone ID: 5E8-G9-B4]

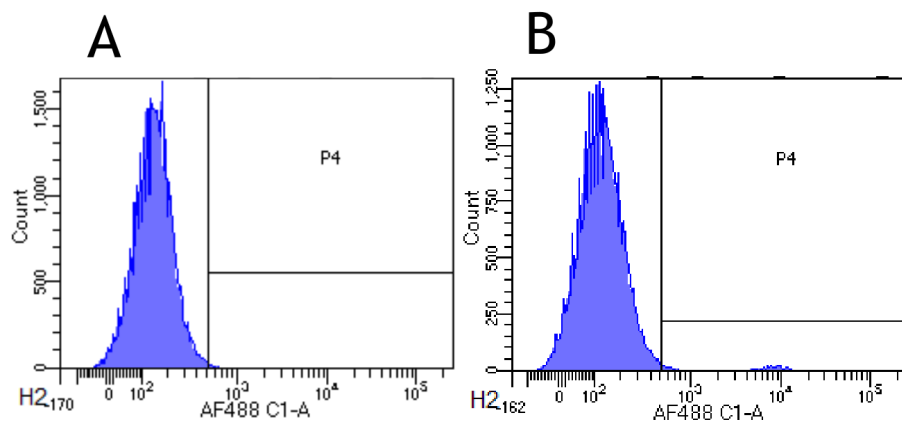
Product data:

Product Type:	Primary Antibodies
Clone Name:	5E8-G9-B4
Applications:	FC
Reactivity:	Human
Host:	Rabbit
Isotype:	IgG, kappa
Clonality:	Monoclonal
Specificity:	Recognises human CCR3, a chemokine receptor highly expressed of eosinophils, as well as Th2-Tcells, basophils, platelets, mast-cells, mononuclear phagocytes, airway epithelial cells, and hematopoietic progenitor cells (CD34+).
Formulation:	PBS with 0.02% Proclin 300.
Concentration:	lot specific
Conjugation:	Unconjugated
Storage:	Please store at 4°C for up to 3 months. For longer storage, aliquot and store at -20°C. Avoid freeze and thaw cycles.
Stability:	3 years from dispatch.
Gene Name:	C-C motif chemokine receptor 3
Database Link:	Entrez Gene 1232 Human P51677
Synonyms:	CC-CKR-3; CCR-3; CD193; CKR3; CMKBR3; MGC102841; OTTHUMP00000164718; OTTHUMP00000209748
Note:	This chimeric rabbit antibody was made using the variable domain sequences of the original murine IgG2b format, for improved compatibility with existing reagents, assays and techniques.



[View online »](#)

Product images:



Flow-cytometry using anti-CCR3 antibody 5 E8-G9-B4 (TA385827) Human leukocytes were stained with an isotype control ([TA385644], panel A) or the rabbit-chimeric version of 5 E8-G9-B4 (TA385827, panel B) at a concentration of 1 µg/ml for 30 mins at RT. After washing, bound antibody was detected using a AF488 conjugated donkey anti-rabbit antibody and cells analysed on a FACSCanto flow-cytometer.