

Product datasheet for **TA385826**

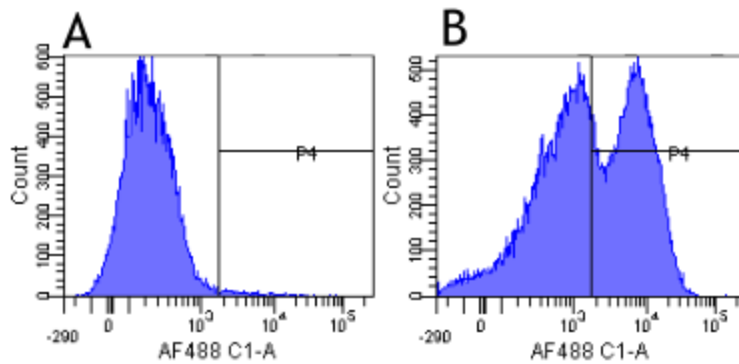
Integrin beta 1 (ITGB1) Rabbit Monoclonal Antibody [Clone ID: K20]

Product data:

Product Type:	Primary Antibodies
Clone Name:	K20
Applications:	FC, IHC
Reactivity:	Human
Host:	Rabbit
Isotype:	IgG, kappa
Clonality:	Monoclonal
Immunogen:	Human T-cell lymphoma cells injected into Biozzi high-responder mice.
Specificity:	Recognises human CD29.
	This antibody binds to CD29.
Formulation:	PBS with 0.02% Proclin 300.
Concentration:	lot specific
Conjugation:	Unconjugated
Storage:	Please store at 4°C for up to 3 months. For longer storage, aliquot and store at -20°C. Avoid freeze and thaw cycles.
Stability:	3 years from dispatch.
Gene Name:	integrin subunit beta 1
Database Link:	Entrez Gene 3688 Human P05556
Synonyms:	CD29; FNRB; GPIIA; MDF2; MSK12; VLA-BETA; VLAB
Note:	This chimeric rabbit antibody was made using the variable domain sequences of the original murine IgG2a format, for improved compatibility with existing reagents, assays and techniques.



[View online »](#)

Product images:

Flow-cytometry using anti-CD29 antibody K20 (TA385826) Human leukocytes were stained with an isotype control ([TA385644], panel A) or the rabbit-chimeric version of K20 (TA385826, panel B) at a concentration of 1 $\mu\text{g/ml}$ for 30 mins at RT. After washing, bound antibody was detected using a AF488 conjugated donkey anti-rabbit antibody and cells analysed on a FACSCanto flow-cytometer.