

Product datasheet for **TA385824**

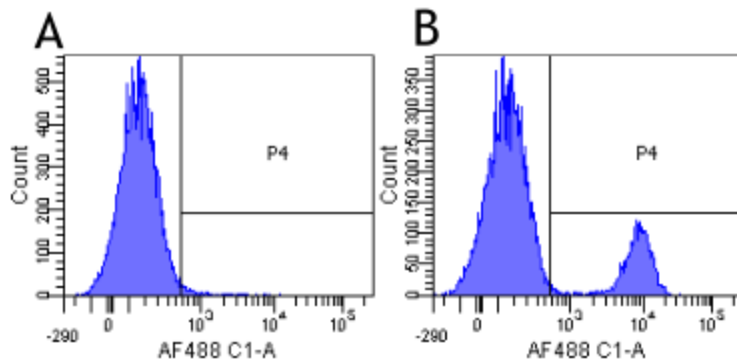
CD19 Rabbit Monoclonal Antibody [Clone ID: 4G7]

Product data:

Product Type:	Primary Antibodies
Clone Name:	4G7
Applications:	FC, IF
Reactivity:	Human
Host:	Rabbit
Isotype:	IgG, kappa
Clonality:	Monoclonal
Immunogen:	Human CCL (chronic lymphocytic leukemia) cells.
Specificity:	Recognises human CD19.
	This antibody was used in the identification of the B-cell epitope CD19.
Formulation:	PBS with 0.02% Proclin 300.
Concentration:	lot specific
Conjugation:	Unconjugated
Storage:	Please store at 4°C for up to 3 months. For longer storage, aliquot and store at -20°C. Avoid freeze and thaw cycles.
Stability:	3 years from dispatch.
Gene Name:	CD19 molecule
Database Link:	Entrez Gene 930 Human P15391
Synonyms:	B4; Leu-12; MGC12802
Note:	This chimeric rabbit antibody was made using the variable domain sequences of the original murine IgG1 format, for improved compatibility with existing reagents, assays and techniques.



[View online »](#)

Product images:

Flow-cytometry using anti-CD19 antibody 4G7 (TA385824) Human lymphocytes were stained with an isotype control ([TA385644], panel A) or the rabbit-chimeric version of 4G7 (TA385824, panel B) at a concentration of 1 $\mu\text{g}/\text{ml}$ for 30 mins at RT. After washing, bound antibody was detected using a AF488 conjugated donkey anti-rabbit antibody and cells analysed on a FACSCanto flow-cytometer.