

Product datasheet for **TA385822**

CD4 Rabbit Monoclonal Antibody [Clone ID: MT310]

Product data:

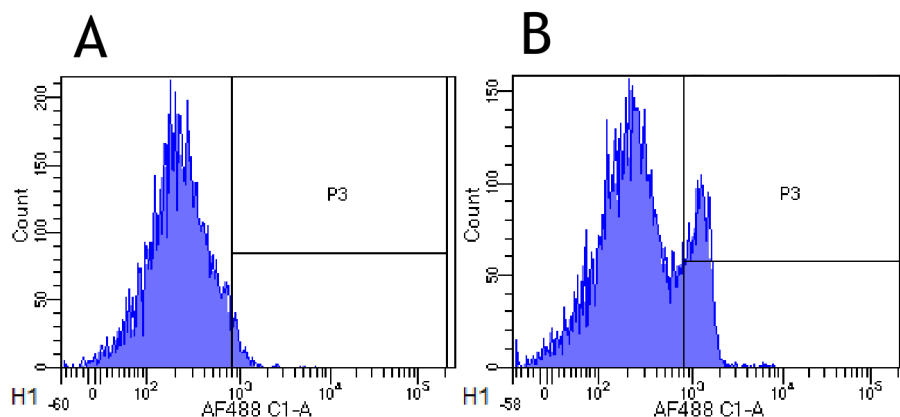
Product Type:	Primary Antibodies
Clone Name:	MT310
Applications:	FC, IF, IHC, IP, WB
Reactivity:	Human, Monkey
Host:	Rabbit
Isotype:	IgG, kappa
Clonality:	Monoclonal
Specificity:	mt310 binds to the extracellular domain D1 of CD4 – the same site as the HIV-1 gp120-binding site

mt310 can inhibit gp120 binding to CD4, which blocks HIV infectivity of CD4+ T lymphocytes, as well as the binding of MHCII, which results in the block of T-cell activation, possibly leading to the induction of anergy. Antibody binding to CD4 additionally causes the induction of GM-CSF, TNF- α (only after 20 h) and IL-10.

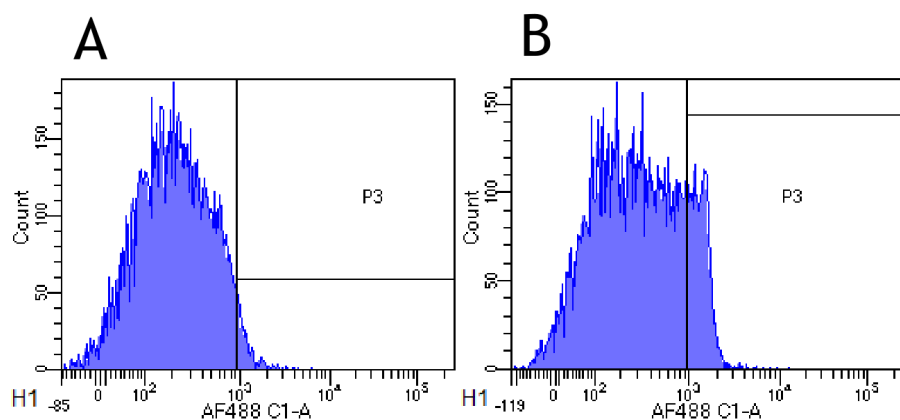
Formulation:	PBS with 0.02% Proclin 300.
Concentration:	lot specific
Conjugation:	Unconjugated
Storage:	Please store at 4°C for up to 3 months. For longer storage, aliquot and store at -20°C. Avoid freeze and thaw cycles.
Stability:	3 years from dispatch.
Gene Name:	CD4 molecule
Database Link:	Entrez Gene 920 Human P01730
Synonyms:	CD4mut
Note:	This chimeric rabbit antibody was made using the variable domain sequences of the original murine IgG1 format, for improved compatibility with existing reagents, assays and techniques.



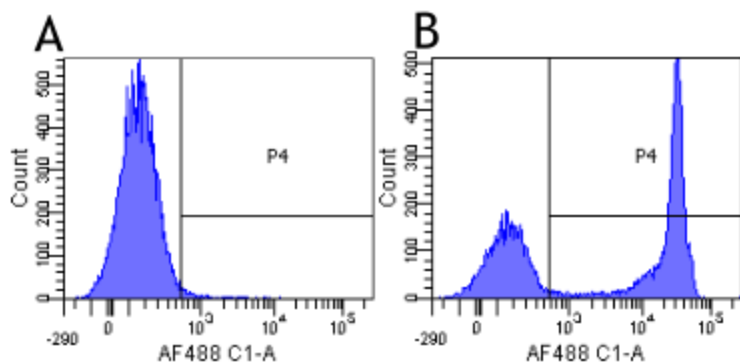
[View online »](#)

Product images:


Flow-cytometry using anti-CD4 antibody MT310 (TA385822) Rhesus monkey lymphocytes were stained with an isotype control ([TA385644], panel A) or the rabbit-chimeric version of MT310 (TA385822, panel B) at a concentration of 1 $\mu\text{g/ml}$ for 30 mins at RT. After washing, bound antibody was detected using a AF488 conjugated donkey anti-rabbit antibody and cells analysed on a FACSCanto flow-cytometer.



Flow-cytometry using anti-CD4 antibody MT310 (TA385822) Cynomolgus monkey lymphocytes were stained with an isotype control ([TA385644], panel A) or the rabbit-chimeric version of MT310 (TA385822, panel B) at a concentration of 1 $\mu\text{g/ml}$ for 30 mins at RT. After washing, bound antibody was detected using a AF488 conjugated donkey anti-rabbit antibody and cells analysed on a FACSCanto flow-cytometer.



Flow-cytometry using anti-CD4 antibody MT310 (TA385822) Human lymphocytes were stained with an isotype control ([TA385644], panel A) or the rabbit-chimeric version of MT310 (TA385822, panel B) at a concentration of 1 $\mu\text{g/ml}$ for 30 mins at RT. After washing, bound antibody was detected using a AF488 conjugated donkey anti-rabbit antibody and cells analysed on a FACSCanto flow-cytometer.