

Product datasheet for **TA385816**

alpha 1 Fetoprotein (AFP) Rabbit Monoclonal Antibody [Clone ID: AF5]

Product data:

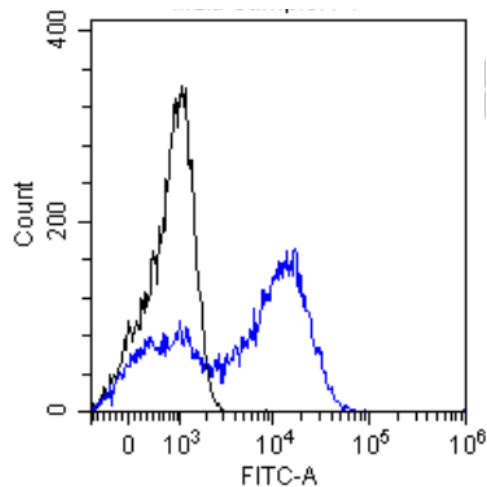
Product Type:	Primary Antibodies
Clone Name:	AF5
Applications:	FC, IF, WB
Reactivity:	Human
Host:	Rabbit
Isotype:	IgG, kappa
Clonality:	Monoclonal
Immunogen:	AF5 was prepared by immunizing female BALB/c mice with human amniotic fluid containing AFP, from a pregnancy affected by a neural tube defect, diluted and emulsified in Freund's complete adjuvant.
Specificity:	Recognises the human Alpha-fetoprotein.
Formulation:	PBS with 0.02% Proclin 300.
Concentration:	lot specific
Conjugation:	Unconjugated
Storage:	Please store at 4°C for up to 3 months. For longer storage, aliquot and store at -20°C. Avoid freeze and thaw cycles.
Stability:	3 years from dispatch.
Gene Name:	alpha fetoprotein
Database Link:	Entrez Gene 174 Human P02771
Synonyms:	alpha-1-fetoprotein; Alpha-fetoglobulin; alpha-fetoprotein; FETA; HP; HPAFP; OTTHUMP00000160480
Note:	This chimeric rabbit antibody was made using the variable domain sequences of the original murine IgG1 format, for improved compatibility with existing reagents, assays and techniques.



[View online »](#)

Product images:

Western Blot using anti-Alpha-fetoprotein antibody AF5 (TA385816) HepG2 cell lysate (35µg protein in RIPA buffer) was resolved on a 10% SDS PAGE gel and blots probed with the chimeric rabbit version of AF5 (TA385816) at 1 µg/ml before detection using an anti-rabbit secondary antibody. A primary incubation of 1h was used and protein was detected by chemiluminescence. The expected band size for Alpha-fetoprotein is 68.7kDa, though this protein is also glycosylated (Uniprot ID: P02771). TA385816 successfully detected human Alpha-fetoprotein in HepG2 cell lysates.



Flow-cytometry using the anti-Alpha-fetoprotein AF5 (TA385816) HepG2 cells were stained with unimmunized rabbit IgG antibody (black line) or the rabbit-chimeric version of AF5 (TA385816, blue line) at a concentration of 10 µg/ml for 30 mins at RT. After washing, bound antibody was detected using anti-rabbit IgG JK (FITC-conjugate) antibody at 2 µg/ml and cells analyzed on a FACSCanto flow-cytometer.