

Product datasheet for **TA385814**

IL2 Receptor alpha (IL2RA) Rabbit Monoclonal Antibody [Clone ID: Basiliximab]

Product data:

Product Type: Primary Antibodies

Clone Name: Basiliximab

Applications: BI, FC, IF, IHC, WB

Reactivity: Human, Monkey

Host: Rabbit

Isotype: IgG, kappa

Clonality: Monoclonal

Immunogen: Basiliximab was prepared by immunizing BALB/c mice with CTC 16 cells.

Specificity: Basiliximab recognises the human IL-2R and binds to the epitope (116)ERIYHFV(122) within the extracellular domain of the CD25 subunit – binding is abolished when 2 or more residues within the epitope are mutated. This epitope overlaps with the interaction site of CD25 and IL-2. CD25 is found in the high-affinity IL-2R ($\alpha\beta\gamma$) – T cells only express CD25 upon activation. IL-2 binding to IL-2R on T cells modulates proliferation and differentiation.

Basiliximab is derived from the murine anti-Tac antibody. For the clinically used format, the variable regions from this antibody were grafted onto the sequence of the human IgG1k constant regions. Basiliximab binding to CD25 competitively blocks the interaction of IL-2R with its ligand IL-2 on the surface of T cells. Blocking this interaction prevents T cell replication and T cell-mediated B cell activation. Basiliximab binding suppresses the immune system inhibits the pathway activating the cellular immune response to allograft rejection. IL-2 signalling suppression can additionally prevent acute graft-versus-host disease, autoimmune disorders and malignancies such as T cell leukemias (Binder et al, 2007). Basiliximab has also been used in FC, IF, IHC and WB studies, which enables the detection of CD25.

Formulation: PBS with 0.02% Proclin 300.

Concentration: lot specific

Conjugation: Unconjugated

Storage: Please store at 4°C for up to 3 months. For longer storage, aliquot and store at -20°C. Avoid freeze and thaw cycles.

Stability: 3 years from dispatch.



[View online »](#)

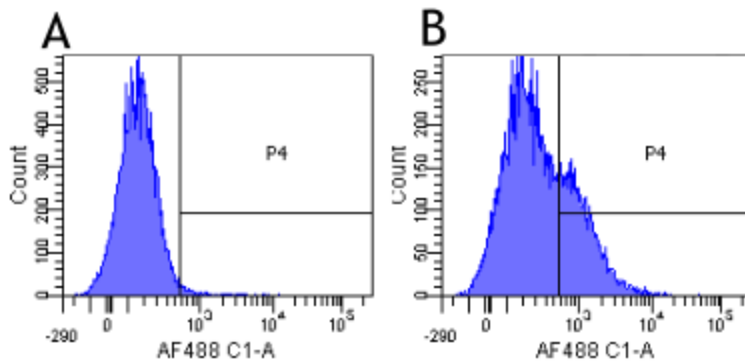
Gene Name: interleukin 2 receptor subunit alpha

Database Link: [Entrez Gene 3559 Human P01589](#)

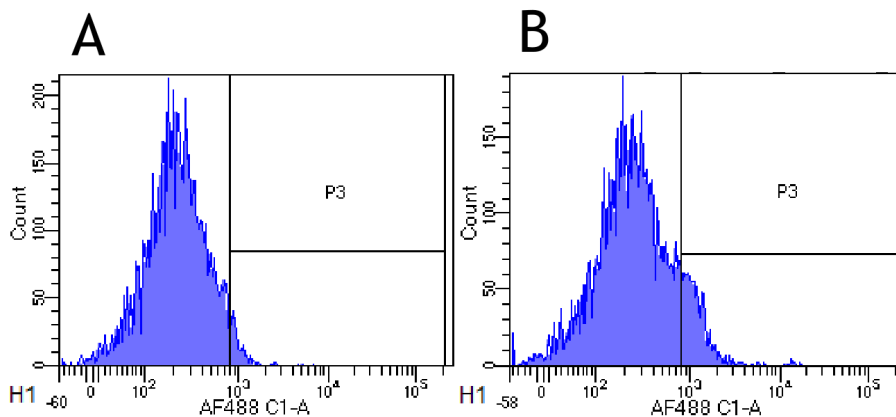
Synonyms: CD25; IDDM10; IL-2-RA; IL2-RA; IL2R; p55; TCGFR

Note: This chimeric rabbit antibody was made using the variable domain sequences of the original Human IgG1 format, for improved compatibility with existing reagents, assays and techniques.

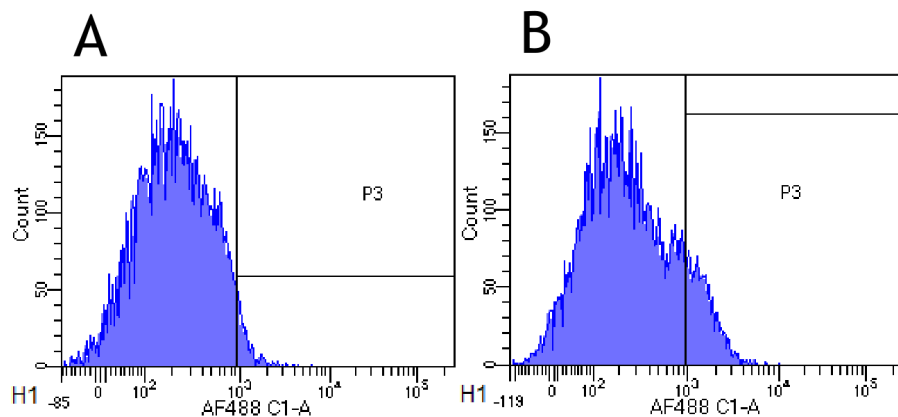
Product images:



Flow-cytometry using the anti-CD25 (IL2R) research biosimilar antibody Basiliximab (TA385814) Human lymphocytes were stained with an isotype control ([TA385644], panel A) or the rabbit-chimeric version of Basiliximab (TA385814, panel B) at a concentration of 1 µg/ml for 30 mins at RT. After washing, bound antibody was detected using a AF488 conjugated donkey anti-rabbit antibody and cells analysed on a FACSCanto flow-cytometer.



Flow-cytometry using anti-CD25 antibody Basiliximab (TA385814) Rhesus monkey lymphocytes were stained with an isotype control ([TA385644], panel A) or the rabbit-chimeric version of Basiliximab (TA385814, panel B) at a concentration of 1 µg/ml for 30 mins at RT. After washing, bound antibody was detected using a AF488 conjugated donkey anti-rabbit antibody and cells analysed on a FACSCanto flow-cytometer.



Flow-cytometry using anti-CD25 antibody Basiliximab (TA385814) Cynomolgus monkey lymphocytes were stained with an isotype control ([TA385644], panel A) or the rabbit-chimeric version of Basiliximab (TA385814, panel B) at a concentration of 1 µg/ml for 30 mins at RT. After washing, bound antibody was detected using a AF488 conjugated donkey anti-rabbit antibody and cells analysed on a FACSCanto flow-cytometer.