

Product datasheet for **TA385813**

IL2 Receptor alpha (IL2RA) Human Monoclonal Antibody [Clone ID: Basiliximab]

Product data:

Product Type: Primary Antibodies

Clone Name: Basiliximab

Applications: BI, FC, IF, IHC, WB

Reactivity: Human, Monkey

Host: Human

Isotype: IgG1, kappa

Clonality: Monoclonal

Immunogen: Basiliximab was prepared by immunizing BALB/c mice with CTC 16 cells.

Specificity: Basiliximab recognises the human IL-2R and binds to the epitope (116)ERIYHFV(122) within the extracellular domain of the CD25 subunit – binding is abolished when 2 or more residues within the epitope are mutated. This epitope overlaps with the interaction site of CD25 and IL-2. CD25 is found in the high-affinity IL-2R ($\alpha\beta\gamma$) – T cells only express CD25 upon activation. IL-2 binding to IL-2R on T cells modulates proliferation and differentiation.

Basiliximab is derived from the murine anti-Tac antibody. For the clinically used format, the variable regions from this antibody were grafted onto the sequence of the human IgG1k constant regions. Basiliximab binding to CD25 competitively blocks the interaction of IL-2R with its ligand IL-2 on the surface of T cells. Blocking this interaction prevents T cell replication and T cell-mediated B cell activation. Basiliximab binding suppresses the immune system inhibits the pathway activating the cellular immune response to allograft rejection. IL-2 signalling suppression can additionally prevent acute graft-versus-host disease, autoimmune disorders and malignancies such as T cell leukemias (Binder et al, 2007). Basiliximab has also been used in FC, IF, IHC and WB studies, which enables the detection of CD25.

Formulation: PBS with 0.02% Proclin 300.

Concentration: lot specific

Conjugation: Unconjugated

Storage: Please store at 4°C for up to 3 months. For longer storage, aliquot and store at -20°C. Avoid freeze and thaw cycles.

Stability: 3 years from dispatch.



[View online »](#)

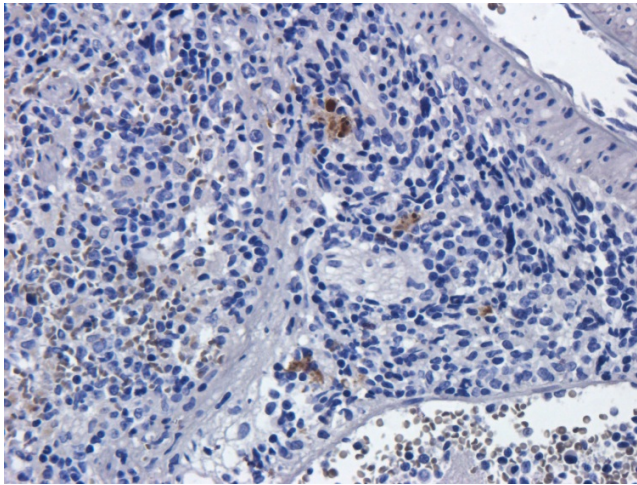
Gene Name: interleukin 2 receptor subunit alpha

Database Link: [Entrez Gene 3559 Human P01589](#)

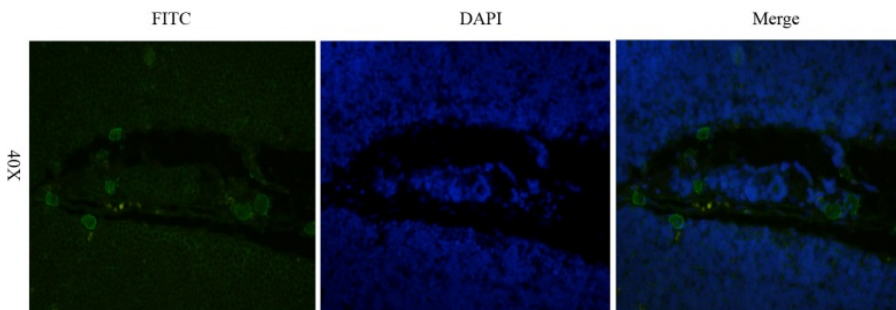
Synonyms: CD25; IDDM10; IL-2-RA; IL2-RA; IL2R; p55; TCGFR

Note: NOT FOR THERAPEUTIC USE - This is a research-grade biosimilar. This is a chimeric antibody created for improved compatibility with existing reagents, assays and techniques.

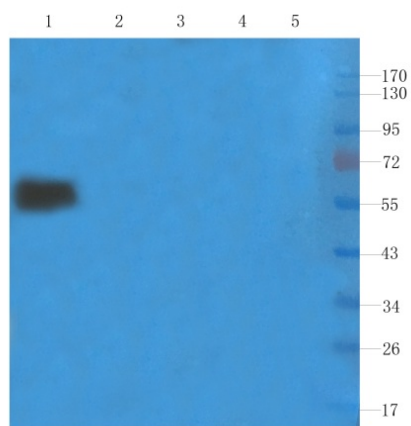
Product images:



Immunohistochemical staining of rat spleens using anti-CD25 antibody TA385813. Formalin fixed rat spleen slices were stained with TA385813 at 5 µg/ml. The anti-human CD25 antibody TA385813 also shows some cross-reactivity with rat in IHC.



Immunofluorescent staining of rat thymus using anti-CD25 antibody TA385813. Formaldehyde-fixed rat thymus slices were stained with TA385813 at 5 µg/ml and detected with a FITC-conjugated secondary antibody. TA385813 shows weak labelling of rat cells by IF.



Western Blot using anti-IL2R alpha (CD25) antibody TA385813 Human thyroid cancer (lane 1), rat spleen (lane 2), mouse lymph node (lane 3), mouse thymus (lane 4) and rat small intestines (lane 5) samples were resolved on a 10% SDS PAGE gel and blots probed with TA385813 at 1 $\mu\text{g}/\text{ml}$ before being detected by a secondary antibody.