

Product datasheet for **TA385803**

beta 2 Microglobulin (B2M) Rabbit Monoclonal Antibody [Clone ID: BBM.1]

Product data:

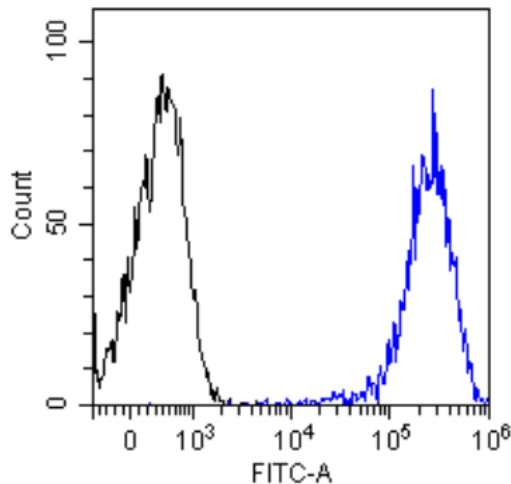
Product Type:	Primary Antibodies
Clone Name:	BBM.1
Applications:	IF, IHC, WB
Reactivity:	Human
Host:	Rabbit
Isotype:	IgG, kappa
Clonality:	Monoclonal
Immunogen:	Molt 4, a human T cell line.
Specificity:	Binds human beta-2-microglobulin, a component of MHC class I molecules, which are present on all nucleated cells (excludes red blood cells) and involved in the presentation of peptide antigens to the immune system.
Formulation:	PBS with 0.02% Proclin 300.
Concentration:	lot specific
Conjugation:	Unconjugated
Storage:	Please store at 4°C for up to 3 months. For longer storage, aliquot and store at -20°C. Avoid freeze and thaw cycles.
Stability:	3 years from dispatch.
Gene Name:	beta-2-microglobulin
Database Link:	Entrez Gene 567 Human P61769
Synonyms:	beta-2-microglobin; beta-2-microglobulin
Note:	This chimeric rabbit antibody was made using the variable domain sequences of the original murine IgG2b format, for improved compatibility with existing reagents, assays and techniques.



[View online »](#)

Product images:

Western Blot using anti-Beta-2 microglobulin antibody BBM.1 (TA385803) HeLa cell lysate (35µg protein in RIPA buffer) was resolved on a 10% SDS PAGE gel and blots probed with the chimeric rabbit version of BBM.1 (TA385803) at 0.03 µg/ml before detection using an anti-rabbit secondary antibody. A primary incubation of 1h was used and protein was detected by chemiluminescence. The expected band size for Beta-2 microglobulin is 13.7 kDa. TA385803 successfully detected human Beta-2 microglobulin in both HeLa cell extract and human duodenum samples.



Flow-cytometry using the anti-Beta-2 microglobulin antibody BBM.1 (TA385803) HeLa cells were stained with unimmunized rabbit IgG antibody (black line) or the rabbit-chimeric version of BBM.1 (TA385803, blue line) at a concentration of 10 µg/ml for 30 mins at RT. After washing, bound antibody was detected using anti-rabbit IgG JK (FITC-conjugate) antibody at 2 µg/ml and cells analyzed on a FACSCanto flow-cytometer.