

Product datasheet for **TA385778**

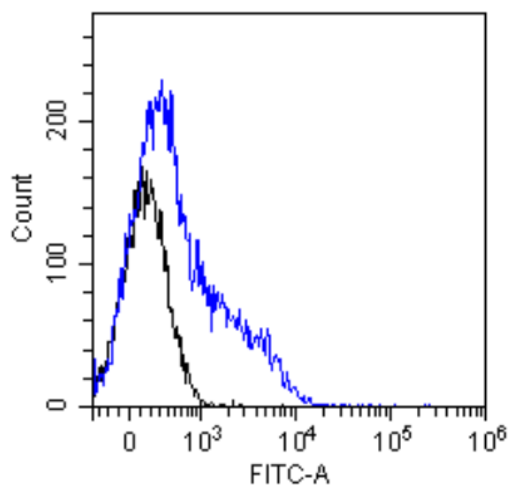
NOTCH1 Rabbit Monoclonal Antibody [Clone ID: E6]

Product data:

Product Type:	Primary Antibodies
Clone Name:	E6
Applications:	ELISA, IHC
Reactivity:	Human, Mouse
Host:	Rabbit
Clonality:	Monoclonal
Immunogen:	This antibody was selected against a fusion protein consisting of EGF domains 1–12 of murine Notch1 fused to a human Fc domain and binds to to the NRR of mouse Notch1.
Specificity:	An engineered ScFv fragment antibody that binds to both mouse mNRR1 and human hNRR1 but not NRR2.
Formulation:	PBS with 0.02% Proclin 300.
Concentration:	lot specific
Conjugation:	Unconjugated
Storage:	Please store at 4°C for up to 3 months. For longer storage, aliquot and store at -20°C. Avoid freeze and thaw cycles.
Stability:	3 years from dispatch.
Gene Name:	notch 1
Database Link:	Entrez Gene 4851 Human P46531
Synonyms:	hN1; TAN1
Note:	This chimeric rabbit antibody was made using the variable domain sequences of the original human scFv format, for improved compatibility with existing reagents, assays and techniques.



[View online »](#)

Product images:

Flow-cytometry using the anti-Notch 1 antibody E6 (TA385778) Mouse thymocytes were stained with unimmunized rabbit IgG antibody (black line) or the rabbit-chimeric version of E6 (TA385778, blue line) at a concentration of 10 $\mu\text{g}/\text{ml}$ for 30 mins at RT. After washing, bound antibody was detected using anti-rabbit IgG JK (FITC-conjugate) antibody at 2 $\mu\text{g}/\text{ml}$ and cells analyzed on a FACSCanto flow-cytometer.