

## Product datasheet for **TA385775**

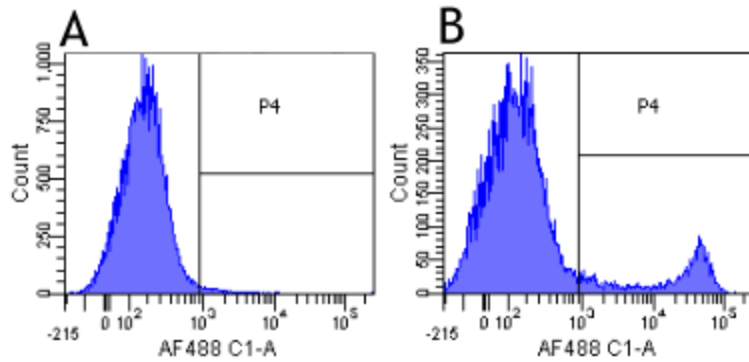
### **Cd8a Rabbit Monoclonal Antibody [Clone ID: YTS 105.18]**

#### **Product data:**

<b>Product Type:</b>	Primary Antibodies
<b>Clone Name:</b>	YTS 105.18
<b>Applications:</b>	BI, FC, IF, IHC
<b>Reactivity:</b>	Mouse
<b>Host:</b>	Rabbit
<b>Isotype:</b>	IgG, kappa
<b>Clonality:</b>	Monoclonal
<b>Immunogen:</b>	Ly-2-transfected mouse L cells.
<b>Specificity:</b>	Recognizes a non polymorphic epitope on the mouse CD8 alpha chain. This antibody has been reported to block MHC I dependent T cell responses in vitro and in vivo.  This antibody can be used to stain for murine CD8 and can be used to block interaction with CD8.
<b>Formulation:</b>	PBS with 0.02% Proclin 300.
<b>Concentration:</b>	lot specific
<b>Conjugation:</b>	Unconjugated
<b>Storage:</b>	Please store at 4°C for up to 3 months. For longer storage, aliquot and store at -20°C. Avoid freeze and thaw cycles.
<b>Stability:</b>	3 years from dispatch.
<b>Gene Name:</b>	CD8 antigen, alpha chain
<b>Database Link:</b>	<a href="#">Entrez Gene 12525 Mouse P01731</a>
<b>Synonyms:</b>	CD8; Leu2; MAL; OTTHUMP00000203721; p32
<b>Note:</b>	This chimeric rabbit antibody was made using the variable domain sequences of the original rat IgG2a format, for improved compatibility with existing reagents, assays and techniques.



[View online »](#)

**Product images:**

Flow-cytometry using anti-CD8a antibody YTS 105.18 (TA385775) Mouse lymphocytes were stained with an isotype control ([TA385644], panel A) or the rabbit-chimeric version of YTS 105.18 (TA385775, panel B) at a concentration of 1 µg/ml for 30 mins at RT. After washing, bound antibody was detected using a AF488 conjugated donkey anti-rabbit antibody and cells analysed on a FACSCanto flow-cytometer.