

## Product datasheet for **TA385764**

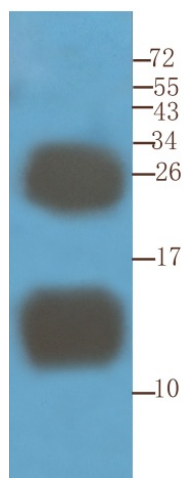
### CD52 Rat Monoclonal Antibody [Clone ID: YTH 34.5-G2b (Campath-1G)]

#### Product data:

Product Type:	Primary Antibodies
Clone Name:	YTH 34.5-G2b (Campath-1G)
Applications:	CT, ELISA, FC, IHC, WB
Reactivity:	Human, Monkey
Host:	Rat
Isotype:	IgG2b, kappa
Clonality:	Monoclonal
Immunogen:	Human peripheral mononuclear cells enriched for T-cells.
Specificity:	Human CD52 antigen, also known as CAMPATH-1. CD52 is expressed at high density by lymphocytes, monocytes, eosinophils, thymocytes and macrophages. It is expressed by most lymphoid derived malignancies, although expression on myeloma cells is variable.
Formulation:	PBS with 0.02% Proclin 300.
Concentration:	lot specific
Conjugation:	Unconjugated
Storage:	Please store at 4°C for up to 3 months. For longer storage, aliquot and store at -20°C. Avoid freeze and thaw cycles.
Stability:	3 years from dispatch.
Gene Name:	CD52 molecule
Database Link:	<a href="#">Entrez Gene 1043 Human P31358</a>
Synonyms:	CDw52; HE5



[View online »](#)

**Product images:**

Western Blot using anti-CD52 antibody YTH 34.5-G2b (Campath-1G)(TA385764). Mouse spleen samples were resolved on a 15% SDS PAGE gel and blots probed with the rat IgG1-chimeric version of YTH 34.5-G2b (TA385764) at 1.5  $\mu\text{g}/\text{ml}$  before detection using an anti-rat secondary antibody. Protein was detected by chemiluminescence. The expected unmodified running size for CD52 is  $\sim 8\text{kDa}$ , but this protein is extensively glycosylated and exhibits running sizes of  $\sim 11\text{-}25\text{kDa}$ . TA385764 successfully detected CD52 in mouse spleen samples.