

Product datasheet for **TA385750**

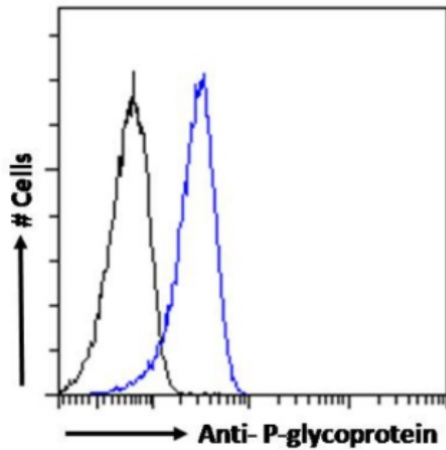
P Glycoprotein (ABCB1) Rabbit Monoclonal Antibody [Clone ID: MRK16]

Product data:

Product Type:	Primary Antibodies
Clone Name:	MRK16
Applications:	FC, IF, IP
Reactivity:	Human
Host:	Rabbit
Isotype:	IgG, kappa
Clonality:	Monoclonal
Immunogen:	Drug resistant K-562 cells.
Specificity:	Recognizes a discontinuous extracellular epitope on P-glycoprotein.
Formulation:	PBS with 0.02% Proclin 300.
Concentration:	lot specific
Conjugation:	Unconjugated
Storage:	Please store at 4°C for up to 3 months. For longer storage, aliquot and store at -20°C. Avoid freeze and thaw cycles.
Stability:	3 years from dispatch.
Gene Name:	ATP binding cassette subfamily B member 1
Database Link:	Entrez Gene 5243 Human P08183
Synonyms:	ABC20; CD243; CLCS; GP170; IBD13; MDR1; MGC163296; P-GP; PGY1
Note:	This chimeric rabbit antibody was made using the variable domain sequences of the original murine IgG1 format, for improved compatibility with existing reagents, assays and techniques.



[View online »](#)

Product images:

Flow-cytometry using the anti-P-glycoprotein antibody MRK16 TA385750). HepG2 cells were fixed using 2% PFA, permeabilised using 0.5% Triton and stained with anti-Fluorescein IgG antibody (clone 4-4-20; isotype control, black line) or the rabbit IgG-chimeric version of MRK16 (TA385750, blue line) at a dilution of 1:100 for 1h at RT. After washing, bound antibody was detected using a goat anti-rabbit IgG AlexaFluor® 488 antibody at a dilution of 1:1000 and cells analyzed using a FACSCanto flow-cytometer.