

Product datasheet for **TA385748**

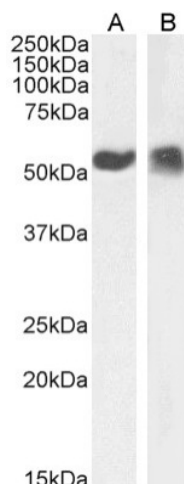
p53 (TP53) Rabbit Monoclonal Antibody [Clone ID: PAb421]

Product data:

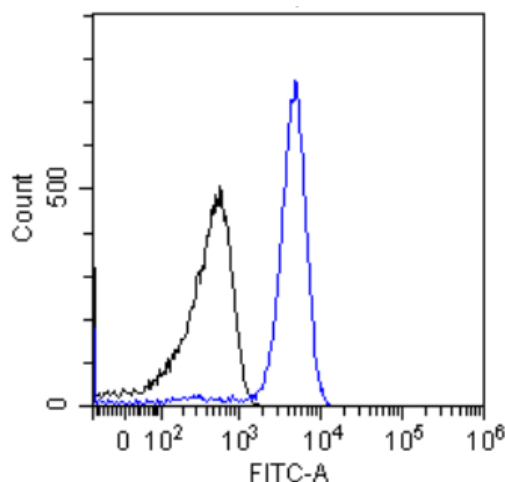
Product Type:	Primary Antibodies
Clone Name:	PAb421
Applications:	ELISA, IF, IHC, IP, WB
Reactivity:	Human, Monkey, Mouse, Rabbit, Rat
Host:	Rabbit
Isotype:	IgG, kappa
Clonality:	Monoclonal
Immunogen:	Synthetic peptide corresponding to aa 371-380 of human p53.
Specificity:	Recognises the mammalian mutant and wild-type p53 protein and reacts with an epitope between amino acid residues 370 and 378 (near the C-terminus of the protein), corresponding to the sequence "KKGQSTSRHK".
Formulation:	PBS with 0.02% Proclin 300.
Concentration:	lot specific
Conjugation:	Unconjugated
Storage:	Please store at 4°C for up to 3 months. For longer storage, aliquot and store at -20°C. Avoid freeze and thaw cycles.
Stability:	3 years from dispatch.
Gene Name:	tumor protein p53
Database Link:	Entrez Gene 7157 Human P04637
Synonyms:	FLJ92943; LFS1; p53; TRP53
Note:	This chimeric rabbit antibody was made using the variable domain sequences of the original murine IgG2a format, for improved compatibility with existing reagents, assays and techniques.

[View online »](#)

Product images:



Western Blot using anti-p53 antibody PAb421 (TA385748). A431 cell nuclear (A) and cytoplasmic (B) extract (35µg protein in RIPA buffer) was resolved on a 10% SDS PAGE gel and blots probed with the chimeric rabbit version of PAb421 (TA385748) at 0.1 µg/ml before detection by an anti-rabbit secondary antibody. A primary incubation of 1h was used and protein was detected by chemiluminescence. The expected band size for p53 is 43.7 kDa, though due to the high number of proline residues in this protein runs at a size of ~53kDa (c.f. Ziemer et al., PMID: 7107651). TA385748 successfully detected both human nuclear and cytoplasmic p53.



Flow-cytometry using the anti-p53 antibody PAb421 (TA385748). Jurkat cells were stained with unimmunized rabbit IgG antibody (black line) or the rabbit-chimeric version of PAb421 (TA385748, blue line) at a concentration of 10 µg/ml for 30 mins at RT. After washing, bound antibody was detected using anti-rabbit IgG JK (FITC-conjugate) antibody at 2 µg/ml and cells analyzed on a FACSCanto flow-cytometer.