

Product datasheet for **TA385742**

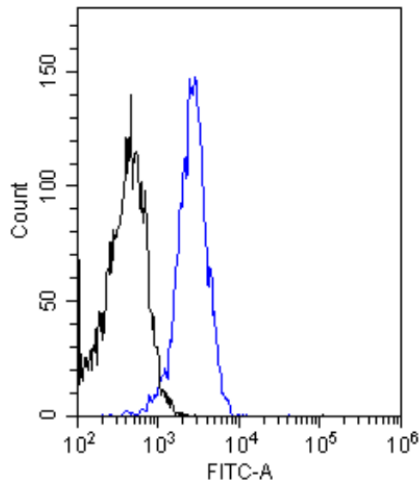
Insulin Receptor (INSR) Rabbit Monoclonal Antibody [Clone ID: 83-14]

Product data:

Product Type:	Primary Antibodies
Clone Name:	83-14
Applications:	ELISA, IF, IHC, IP, WB
Reactivity:	Human, Bovine, Pig, Sheep
Host:	Rabbit
Isotype:	IgG, kappa
Clonality:	Monoclonal
Immunogen:	This antibody was raised by immunizing mice with IM-9 lymphocytes followed by purified insulin receptor.
Specificity:	Recognises the extracellular domain of the Insulin Receptor alpha. Amino acids 469 - 592 (exon 7 and 8) of Insulin Receptor alpha.
Formulation:	PBS with 0.02% Proclin 300.
Concentration:	lot specific
Conjugation:	Unconjugated
Storage:	Please store at 4°C for up to 3 months. For longer storage, aliquot and store at -20°C. Avoid freeze and thaw cycles.
Stability:	3 years from dispatch.
Gene Name:	insulin receptor
Database Link:	Entrez Gene 3643 Human P06213
Synonyms:	CD220; HHF5; IR
Note:	This chimeric rabbit antibody was made using the variable domain sequences of the original murine IgG2a format, for improved compatibility with existing reagents, assays and techniques.



[View online »](#)

Product images:

Flow-cytometry using the anti-Insulin Receptor alpha antibody 83-14 (TA385742). Jurkat cells were stained with unimmunized rabbit IgG antibody (black line) or the rabbit-chimeric version of 83-14 (TA385742, blue line) at a concentration of 10 µg/ml for 30 mins at RT. After washing, bound antibody was detected using anti-rabbit IgG JK (FITC-conjugate) antibody at 2 µg/ml and cells analyzed on a FACSCanto flow-cytometer.