

Product datasheet for **TA385706**

EGFR Rabbit Monoclonal Antibody [Clone ID: 528]

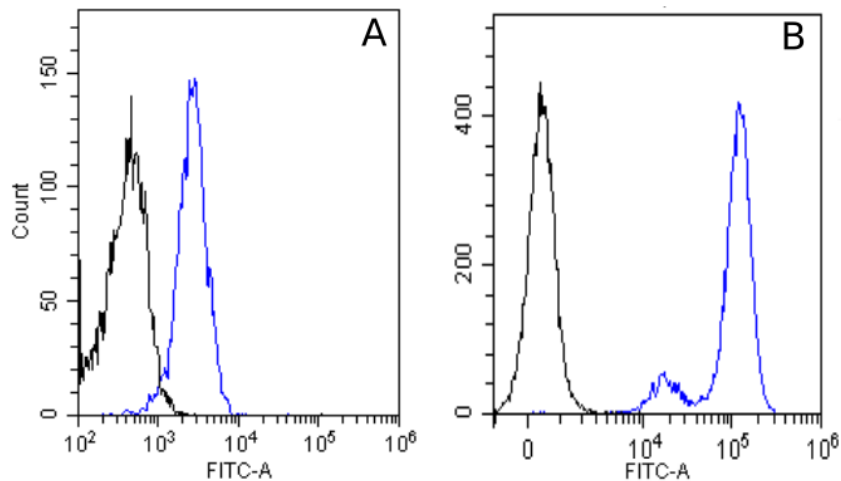
Product data:

Product Type:	Primary Antibodies
Clone Name:	528
Applications:	FC, IF, IHC, IP, WB
Reactivity:	Human
Host:	Rabbit
Isotype:	IgG, kappa
Clonality:	Monoclonal
Immunogen:	Partially purified EGFR from A431 cells.
Specificity:	Recognizes the extracellular domain of EGFR.
Formulation:	PBS with 0.02% Proclin 300.
Concentration:	lot specific
Conjugation:	Unconjugated
Storage:	Please store at 4°C for up to 3 months. For longer storage, aliquot and store at -20°C. Avoid freeze and thaw cycles.
Stability:	3 years from dispatch.
Gene Name:	epidermal growth factor receptor
Database Link:	Entrez Gene 1956 Human P00533
Synonyms:	ERBB; ERBB1; HER1; mENA; PIG61
Note:	This chimeric rabbit antibody was made using the variable domain sequences of the original murine IgG2a format, for improved compatibility with existing reagents, assays and techniques.



[View online »](#)

Product images:



Flow-cytometry using the anti-EGFR antibody 528 (TA385706). HeLa (A) and A431 (B) cells were stained with unimmunized rabbit IgG antibody (black line) or the rabbit-chimeric version of 528 (TA385706, blue line) at a concentration of 10 $\mu\text{g}/\text{ml}$ for 30 mins at RT. After washing, bound antibody was detected using an anti-rabbit IgG JK (FITC-conjugate) antibody at 2 $\mu\text{g}/\text{ml}$ and cells analysed on a FACSCanto flow-cytometer.