

Product datasheet for **TA385700**

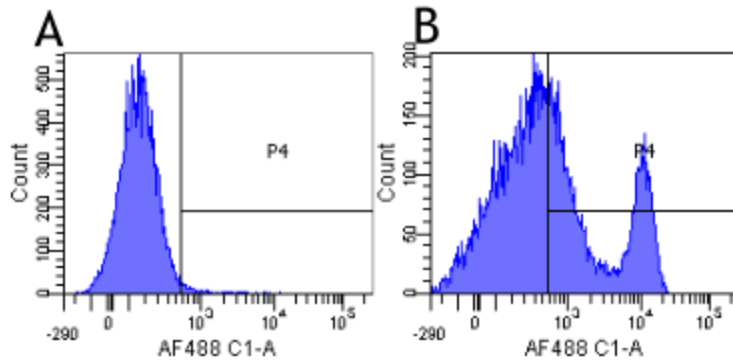
CD40 Rabbit Monoclonal Antibody [Clone ID: G28.5]

Product data:

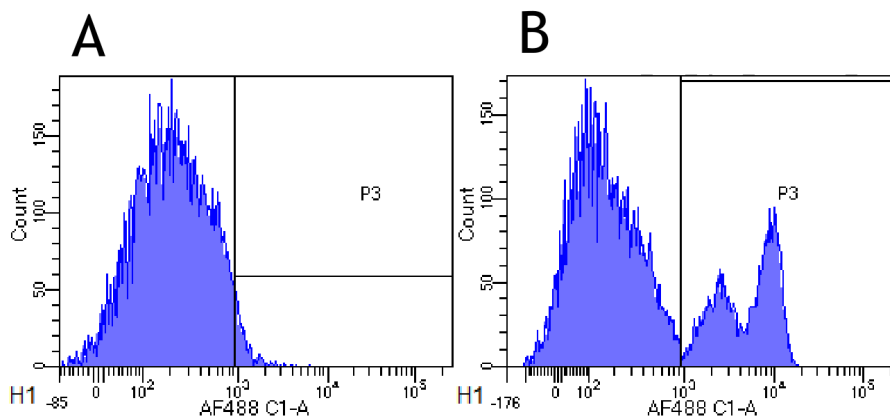
Product Type:	Primary Antibodies
Clone Name:	G28.5
Applications:	FC, IHC, IP
Reactivity:	Human
Host:	Rabbit
Isotype:	IgG, kappa
Clonality:	Monoclonal
Immunogen:	Human erythrocyte-rosette-negative tonsillar lymphocytes.
Specificity:	48 kD Type I glycoprotein, a member of the TNFR superfamily primarily expressed on normal or malignant B cells or B cell lines, macrophages, follicular dendritic cells, endothelial cells, fibroblasts, and at low levels on plasma cells. This antibody detects CD40 by immunostaining. The original mouse IgG1 format was shown to stimulate B-cells (Bishop 2012 and references therein).
Formulation:	PBS with 0.02% Proclin 300.
Concentration:	lot specific
Conjugation:	Unconjugated
Storage:	Please store at 4°C for up to 3 months. For longer storage, aliquot and store at -20°C. Avoid freeze and thaw cycles.
Stability:	3 years from dispatch.
Gene Name:	CD40 molecule
Database Link:	Entrez Gene 958 Human P25942
Synonyms:	Bp50; CDW40; MGC9013; p50; TNFRSF5
Note:	This chimeric rabbit antibody was made using the variable domain sequences of the original murine IgG1 format, for improved compatibility with existing reagents, assays and techniques.



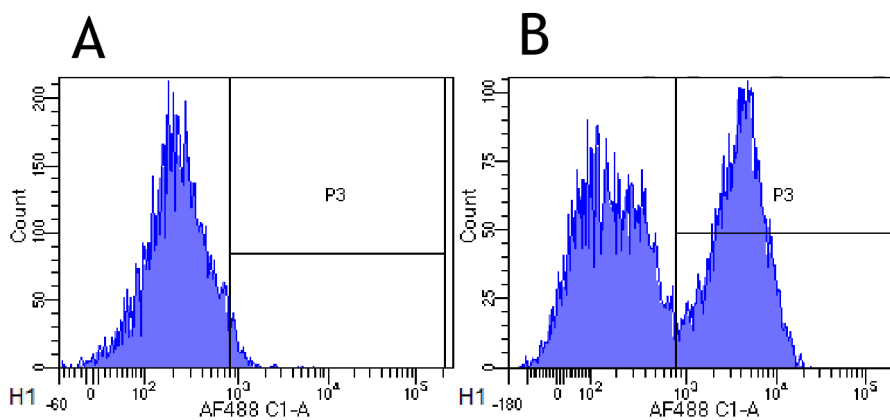
[View online »](#)

Product images:


Flow-cytometry using anti-CD40 antibody G28.5 (TA385700). Human lymphocytes were stained with an isotype control ([TA385644], panel A) or the rabbit-chimeric version of G28.5 (TA385700, panel B) at a concentration of 1 µg/ml for 30 mins at RT. After washing, bound antibody was detected using a AF488 conjugated donkey anti-rabbit antibody and cells analysed on a FACSCanto flow-cytometer.



Flow-cytometry using anti-CD40 antibody G28.5 (TA385700). Cynomolgus monkey lymphocytes were stained with an isotype control ([TA385644], panel A) or the rabbit-chimeric version of G28.5 (TA385700, panel B) at a concentration of 1 µg/ml for 30 mins at RT. After washing, bound antibody was detected using a AF488 conjugated donkey anti-rabbit antibody and cells analysed on a FACSCanto flow-cytometer.



Flow-cytometry using anti-CD40 antibody G28.5 (TA385700). Rhesus monkey lymphocytes were stained with an isotype control ([TA385644], panel A) or the rabbit-chimeric version of G28.5 (TA385700, panel B) at a concentration of 1 µg/ml for 30 mins at RT. After washing, bound antibody was detected using a AF488 conjugated donkey anti-rabbit antibody and cells analysed on a FACSCanto flow-cytometer.