

## Product datasheet for **TA385698**

### CD38 Rabbit Monoclonal Antibody [Clone ID: HB7]

#### Product data:

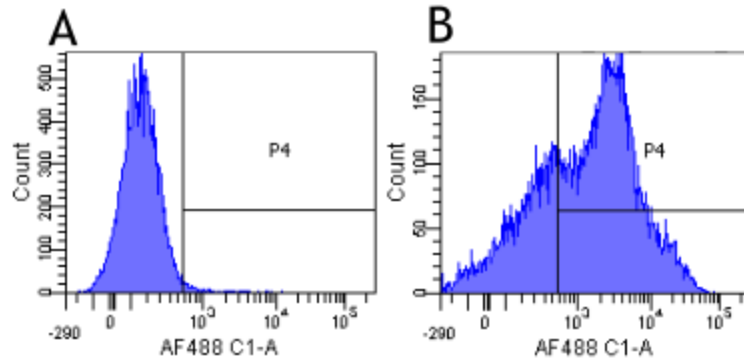
Product Type:	Primary Antibodies
Clone Name:	HB7
Applications:	FC, WB
Reactivity:	Human
Host:	Rabbit
Isotype:	IgG, kappa
Clonality:	Monoclonal
Immunogen:	Viable cells (1 x 10E7) of the human cell line, BJAB (Human Burkitt lymphoma B cell line), which were injected intraperitoneally into 8-week-old BALB/c mice.
Specificity:	<p>This antibody binds to an epitope between amino acids 273-285 of human CD38, an approximately 45 kDa type II transmembrane protein, expressed on essentially all pre-B lymphocytes, plasma cells, and thymocytes. Also present on activated T lymphocytes, natural killer (NK) lymphocytes, myeloblasts, and erythroblasts. Bimodally expressed during B cell development, modulating from high in immature cells to low in intermediate ones and back to high on mature B cells. This antibody competes with clone AT13/5 (Ab00289) (Ellis 1995).</p> <p>A customer reports successfully using this antibody (coupled to magnetic beads) for isolation of plasma cells from the intestinal lamina propria.</p>
Formulation:	PBS with 0.02% Proclin 300.
Concentration:	lot specific
Conjugation:	Unconjugated
Storage:	Please store at 4°C for up to 3 months. For longer storage, aliquot and store at -20°C. Avoid freeze and thaw cycles.
Stability:	3 years from dispatch.
Gene Name:	CD38 molecule
Database Link:	<a href="#">Entrez Gene 952 Human P28907</a>
Synonyms:	T10



[View online »](#)

**Note:** This chimeric rabbit antibody was made using the variable domain sequences of the original murine IgG1 format, for improved compatibility with existing reagents, assays and techniques.

### Product images:



Flow-cytometry using anti-CD38 antibody HB7 (TA385698) Human lymphocytes were stained with an isotype control ([TA385644], panel A) or the rabbit-chimeric version of HB7 (TA385698, panel B) at a concentration of 1 µg/ml for 30 mins at RT. After washing, bound antibody was detected using a AF488 conjugated donkey anti-rabbit antibody and cells analysed on a FACSCanto flow-cytometer.