

Product datasheet for **TA385694**

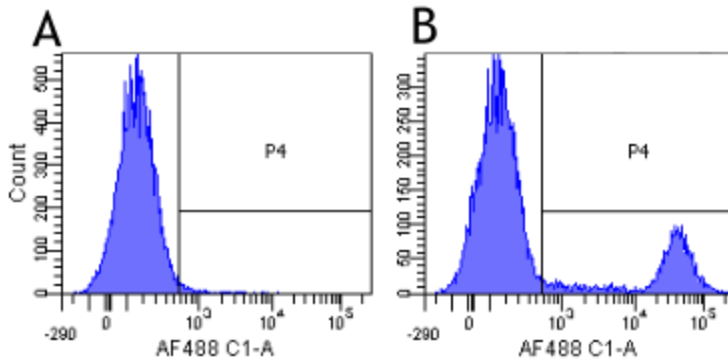
CD20 (MS4A1) Rabbit Monoclonal Antibody [Clone ID: 10F381 (rituximab)]

Product data:

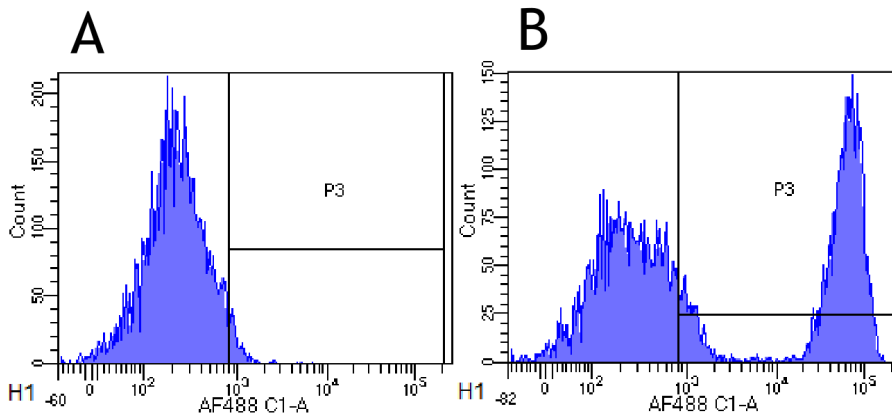
Product Type:	Primary Antibodies
Clone Name:	10F381 (rituximab)
Applications:	FC
Reactivity:	Human, Monkey
Host:	Rabbit
Isotype:	IgG, kappa
Clonality:	Monoclonal
Immunogen:	Human lymphoblastoid cell line SB.
Specificity:	CD20 (Human B-lymphocyte-restricted differentiation antigen, Bp35), is a hydrophobic transmembrane protein with a molecular weight of approximately 35 kDa located on pre-B and mature B lymphocytes, and most B-cell non-Hodgkin's lymphomas, but is not found on stem cells, pro-B cells, normal plasma cells or other normal tissues .
Formulation:	PBS with 0.02% Proclin 300.
Concentration:	lot specific
Conjugation:	Unconjugated
Storage:	Please store at 4°C for up to 3 months. For longer storage, aliquot and store at -20°C. Avoid freeze and thaw cycles.
Stability:	3 years from dispatch.
Gene Name:	membrane spanning 4-domains A1
Database Link:	Entrez Gene 931 Human P11836
Synonyms:	B1; Bp35; CD20; LEU-16; MGC3969; MS4A2; S7
Note:	This chimeric rabbit antibody was made using the variable domain sequences of the original Human IgG1 format, for improved compatibility with existing reagents, assays and techniques.



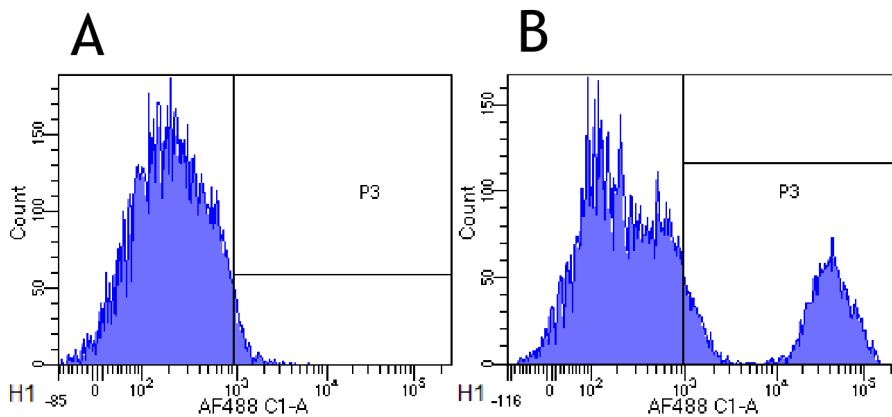
[View online »](#)

Product images:


Flow-cytometry using the anti-CD20 research biosimilar antibody Rituximab (TA385694). Human lymphocytes were stained with an isotype control ([TA385644], panel A) or the rabbit-chimeric version of Rituximab (TA385694, panel B) at a concentration of 1 $\mu\text{g/ml}$ for 30 mins at RT. After washing, bound antibody was detected using a AF488 conjugated donkey anti-rabbit antibody and cells analysed on a FACSCanto flow-cytometer.



Flow-cytometry using the anti-CD20 research biosimilar antibody Rituximab (TA385694). Rhesus monkey lymphocytes were stained with an isotype control ([TA385644], panel A) or the rabbit-chimeric version of Rituximab (TA385694, panel B) at a concentration of 1 $\mu\text{g/ml}$ for 30 mins at RT. After washing, bound antibody was detected using a AF488 conjugated donkey anti-rabbit antibody and cells analysed on a FACSCanto flow-cytometer.



Flow-cytometry using the anti-CD20 research biosimilar antibody Rituximab (TA385694). Cynomolgus monkey lymphocytes were stained with an isotype control ([TA385644], panel A) or the rabbit-chimeric version of Rituximab (TA385694, panel B) at a concentration of 1 $\mu\text{g/ml}$ for 30 mins at RT. After washing, bound antibody was detected using a AF488 conjugated donkey anti-rabbit antibody and cells analysed on a FACSCanto flow-cytometer.