

## Product datasheet for **TA385690**

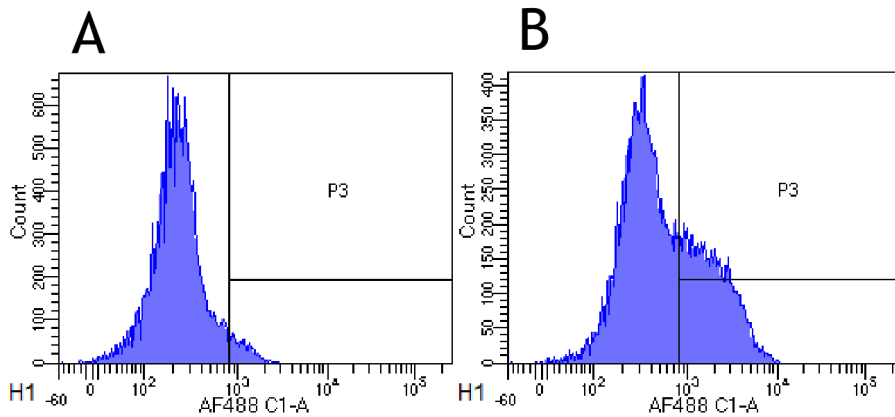
### CD52 Rabbit Monoclonal Antibody [Clone ID: Campath-1H]

#### Product data:

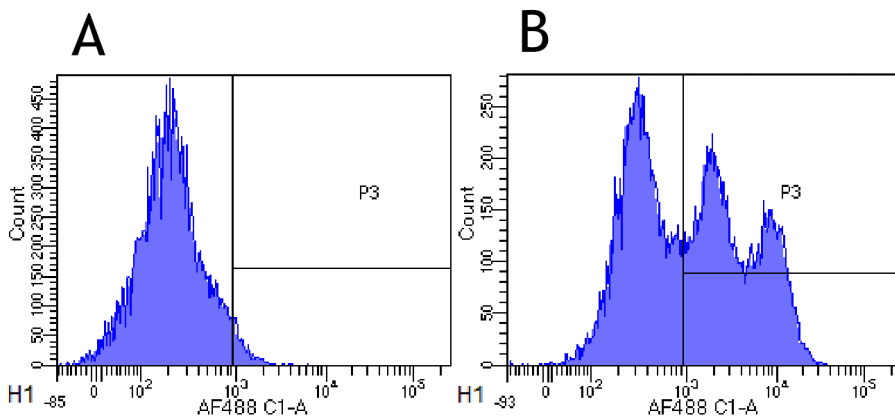
Product Type:	Primary Antibodies
Clone Name:	Campath-1H
Applications:	CT, ELISA, FC, IHC, WB
Reactivity:	Human, Monkey
Host:	Rabbit
Isotype:	IgG, kappa
Clonality:	Monoclonal
Immunogen:	Human lymphocytes.
Specificity:	Human CD52 antigen, also known as CAMPATH-1. CD52 is expressed at high density by lymphocytes, monocytes, eosinophils, thymocytes and macrophages. It is expressed by most lymphoid derived malignancies, although expression on myeloma cells is variable.
Formulation:	PBS with 0.02% Proclin 300.
Concentration:	lot specific
Conjugation:	Unconjugated
Storage:	Please store at 4°C for up to 3 months. For longer storage, aliquot and store at -20°C. Avoid freeze and thaw cycles.
Stability:	3 years from dispatch.
Gene Name:	CD52 molecule
Database Link:	<a href="#">Entrez Gene 1043 Human P31358</a>
Synonyms:	CDw52; HE5
Note:	This chimeric rabbit antibody was made using the variable domain sequences of the original Human IgG1 format, for improved compatibility with existing reagents, assays and techniques.



[View online »](#)

**Product images:**


Flow-cytometry using anti-CD52 antibody Campath-1H (TA385690). Rhesus monkey lymphocytes were stained with an isotype control ([TA385644], panel A) or the rabbit-chimeric version of Campath-1H (TA385690, panel B) at a concentration of 1  $\mu\text{g}/\text{ml}$  for 30 mins at RT. After washing, bound antibody was detected using a AF488 conjugated donkey anti-rabbit antibody and cells analysed on a FACSCanto flow-cytometer.



Flow-cytometry using anti-CD52 antibody Campath-1H (TA385690). Cynomolgus monkey lymphocytes were stained with an isotype control ([TA385644], panel A) or the rabbit-chimeric version of Campath-1H (TA385690, panel B) at a concentration of 1  $\mu\text{g}/\text{ml}$  for 30 mins at RT. After washing, bound antibody was detected using a AF488 conjugated donkey anti-rabbit antibody and cells analysed on a FACSCanto flow-cytometer.