

Product datasheet for **TA385689**

CD52 Human Monoclonal Antibody [Clone ID: Campath-1H]

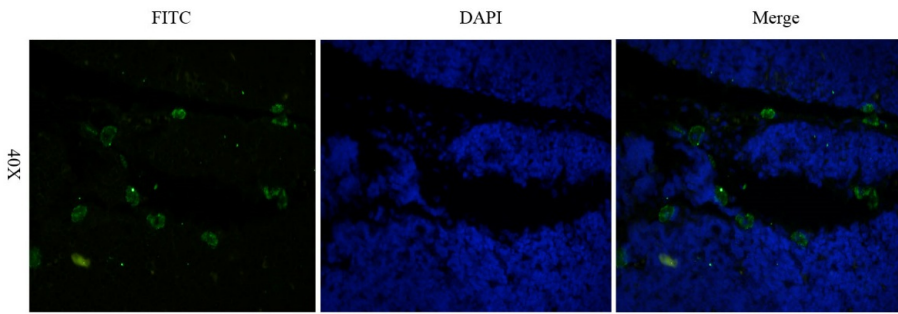
Product data:

Product Type:	Primary Antibodies
Clone Name:	Campath-1H
Applications:	CT, ELISA, FC, IHC, WB
Reactivity:	Human, Monkey
Host:	Human
Isotype:	IgG1, kappa
Clonality:	Monoclonal
Immunogen:	Human lymphocytes.
Specificity:	Human CD52 antigen, also known as CAMPATH-1. CD52 is expressed at high density by lymphocytes, monocytes, eosinophils, thymocytes and macrophages. It is expressed by most lymphoid derived malignancies, although expression on myeloma cells is variable.
Formulation:	PBS with 0.02% Proclin 300.
Concentration:	lot specific
Conjugation:	Unconjugated
Storage:	Please store at 4°C for up to 3 months. For longer storage, aliquot and store at -20°C. Avoid freeze and thaw cycles.
Stability:	3 years from dispatch.
Gene Name:	CD52 molecule
Database Link:	Entrez Gene 1043 Human P31358
Synonyms:	CDw52; HE5
Note:	NOT FOR THERAPEUTIC USE - This is a research-grade biosimilar.

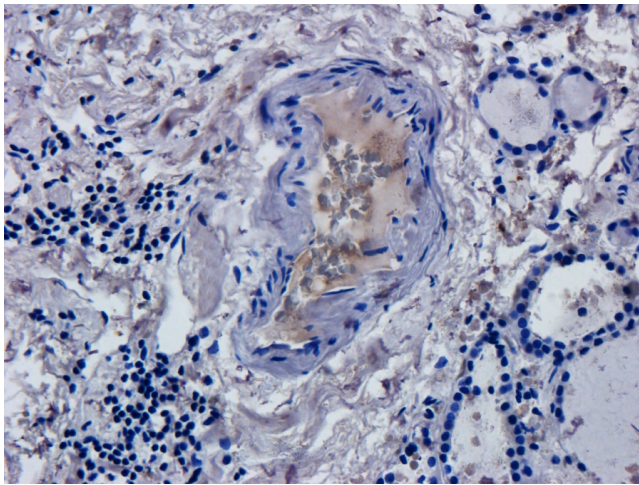


[View online »](#)

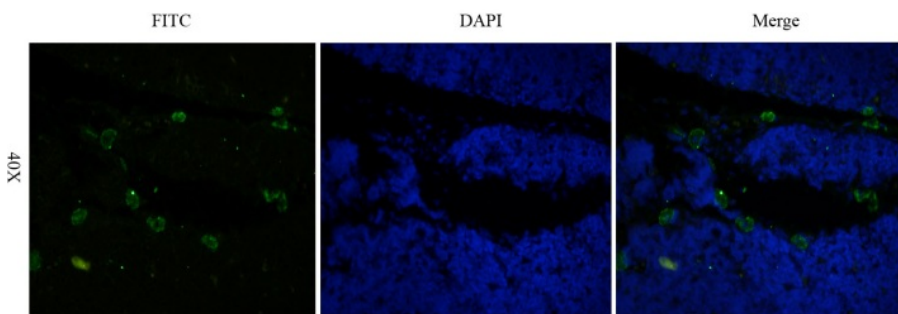
Product images:



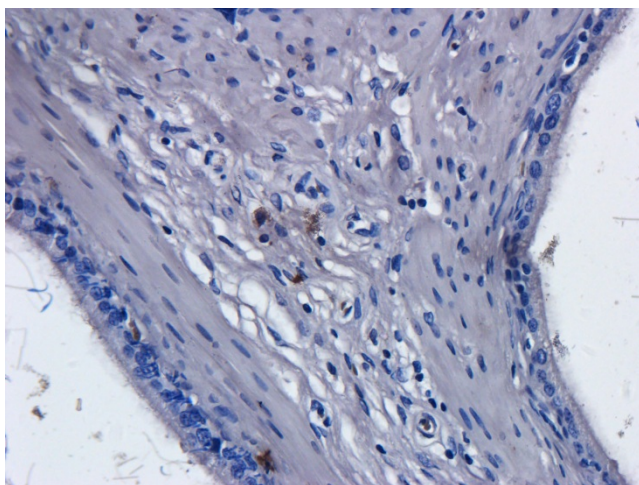
Immunofluorescent staining of rat thymus using anti-CD52 antibody TA385689. Formaldehyde-fixed rat thymus slices were stained with TA385689 at 5 µg/ml and detected with a FITC-conjugated secondary antibody. TA385689 shows cross-reactivity with rat.



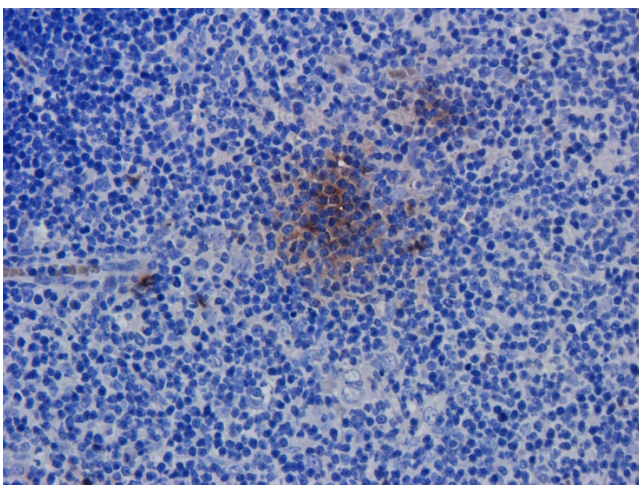
Immunohistochemical staining of human thyroid cancer using anti-CD52 antibody TA385689. Formalin fixed human thyroid cancer slices were stained with a TA385689 at 5 µg/ml.



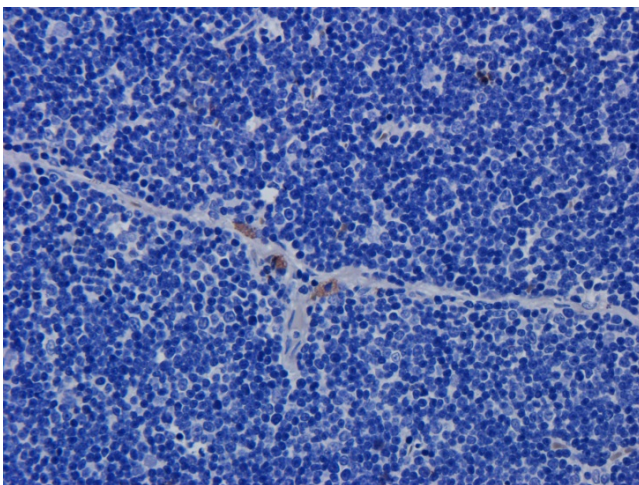
Immunofluorescence staining of fixed rat thymus tissue with anti-CD52 antibody Campath-1H (TA385689). Immunofluorescence analysis of fixed rat thymus tissue stained with the chimeric human IgG1 version of Campath-1H (TA385689) at 5 µg/ml followed by a FITC conjugated secondary antibody, showing membrane and cytoplasmic staining of a subset of cells. The nuclear stain is DAPI (blue). Panels show from left-right; TA385689 (FITC), DAPI and merged channels.



Immunohistochemical staining of rat epididymis tissue using anti-CD52 antibody (TA385689) Campath-1H. Anti-CD52 staining of formaldehyde fixed paraffin embedded rat epididymis tissue, at 40x magnification. The human IgG1-chimeric version of Campath-1H (TA385689) was used to stain samples at a concentration of 5 $\mu\text{g/ml}$.



Immunohistochemical staining of rat spleen tissue using anti-CD52 antibody (TA385689) Campath-1H. Anti-CD52 staining of formaldehyde fixed paraffin embedded rat spleen tissue, at 40x magnification. The human IgG1-chimeric version of Campath-1H (TA385689) was used to stain samples at a concentration of 5 $\mu\text{g/ml}$.



Immunohistochemical staining of rat thymus tissue using anti-CD52 antibody (TA385689) Campath-1H. Anti-CD52 staining of formaldehyde fixed paraffin embedded rat thymus tissue, at 40x magnification. The human IgG1-chimeric version of Campath-1H (TA385689) was used to stain samples at a concentration of 5 $\mu\text{g/ml}$.