

Product datasheet for **TA385684**

Cd3e Rabbit Monoclonal Antibody [Clone ID: 500A2]

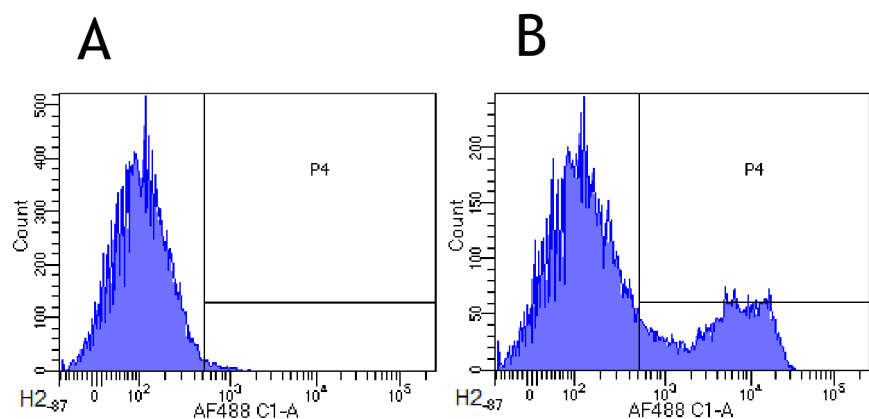
Product data:

Product Type:	Primary Antibodies
Clone Name:	500A2
Applications:	FC
Reactivity:	Mouse
Host:	Rabbit
Isotype:	IgG, kappa
Clonality:	Monoclonal
Immunogen:	T cell receptor complexes derived from mouse C6VL-BS thymoma cells (C57BL/Ka).
Specificity:	The 25-kDa ϵ chain of the T-cell receptor-associated CD3 complex expressed on thymocytes, mature T lymphocytes, and NK-T cells on many mouse stains. This antibody binds to murine CD3 epsilon. It partially cross-blocks binding of clone 145-2C11 (Ab00112) indicating that overlapping epitopes are detected by these antibodies.
Formulation:	PBS with 0.02% Proclin 300.
Concentration:	lot specific
Conjugation:	Unconjugated
Storage:	Please store at 4°C for up to 3 months. For longer storage, aliquot and store at -20°C. Avoid freeze and thaw cycles.
Stability:	3 years from dispatch.
Gene Name:	CD3 antigen, epsilon polypeptide
Database Link:	Entrez Gene 12501 Mouse P22646
Synonyms:	CD3-epsilon; FLJ18683; T3E; TCRE
Note:	This chimeric rabbit antibody was made using the variable domain sequences of the original Hamster IgG2 format, for improved compatibility with existing reagents, assays and techniques.



[View online »](#)

Product images:



Flow-cytometry using anti-CD3epsilon antibody 500A2 (TA385684). Mouse lymphocytes were stained with an anti-CD44 control ([TA386028], panel A) or the rabbit-chimeric version of clone 500A2 (TA385684, panel B) at a concentration of 1 µg/ml for 30 mins at RT. After washing, bound antibody was detected using a AF488 conjugated donkey anti-rabbit antibody and cells analysed on a FACSCanto flow-cytometer.