

Product datasheet for **TA385654**

Her2 (ERBB2) Rabbit Monoclonal Antibody [Clone ID: 4D5-8 (trastuzumab)]

Product data:

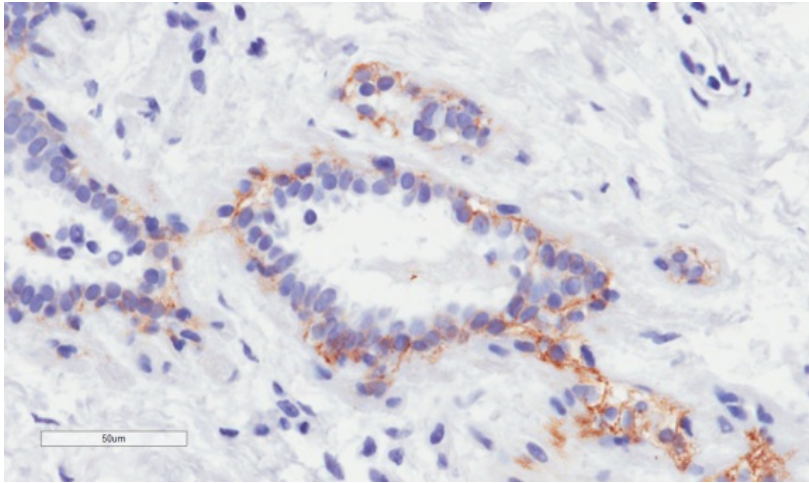
Product Type:	Primary Antibodies
Clone Name:	4D5-8 (trastuzumab)
Applications:	ELISA, FC, IHC
Reactivity:	Human
Host:	Rabbit
Isotype:	IgG, kappa
Clonality:	Monoclonal
Immunogen:	A431 cells (human epidermoid carcinoma) (over)expressing EGFR.
Specificity:	<p>Oncogenic protein Her-2/neu (erbB-2), a member of the family of epidermal growth factor (EGF) receptors, overexpressed in 30% of invasive breast cancers and 70% of ductal carcinomata in situ, in a small percentage of melanomas, and in other malignancies originating from various organs, including ovary, kidney, colon, and bladder.</p> <p>This antibody binds to erbB-2/Her-2/neu has therapeutic indications particularly in the treatment of breast cancer (c.f. Herceptin). It can also be used to detect HER-2 by flow cytometry or IHC (Glazyrin 2007).</p>
Formulation:	PBS with 0.02% Proclin 300.
Concentration:	lot specific
Conjugation:	Unconjugated
Storage:	Please store at 4°C for up to 3 months. For longer storage, aliquot and store at -20°C. Avoid freeze and thaw cycles.
Stability:	3 years from dispatch.
Gene Name:	erb-b2 receptor tyrosine kinase 2
Database Link:	Entrez Gene 2064 Human P04626
Synonyms:	C-erbB-2; CD340; erbB-2; HER-2; HER-2/neu; HER2; herstatin; NEU; NGL; p185erbB2; TKR1



[View online »](#)

Note: This chimeric rabbit antibody was made using the variable domain sequences of the original Human IgG1 format, for improved compatibility with existing reagents, assays and techniques.

Product images:



Immunohistochemical staining of paraffin embedded human breast tissue using anti-erbB-2 antibody (TA385654) 4D5-8 (trastuzumab). Anti-erbB-2 (Her-2/neu) staining of paraffin embedded human breast tissue using the rabbit-chimeric version of 4D5-8 (trastuzumab) (TA385654). Antigen retrieval was achieved by microwaving in citrate buffer (pH6), followed by blocking with protein block serum-free buffer. Primary antibody incubation with TA385654 was carried out at 4 µg/ml for 30 minutes. Samples were then incubated with an anti-rabbit IgG HRP secondary antibody for 20 mins followed by DAB (3,3'-diaminobenzidine), and counter-staining with haematoxylin. Weak membrane staining exclusively of ductal epithelial cells may be observed. Recommended concentration, 4-6 µg/ml.